

# Consultation

Additional Capacity for  
Burnbrae Primary School

## Introduction

Midlothian Council has decided to provide additional non-denominational capacity for **Burnbrae Primary School** at a new campus on the site of the former Hopefield Primary School in Bonnyrigg. We are proposing that this additional capacity will be used to provide Early Level education and accommodate all nursery and Primary 1 pupils. We want to hear your views on this proposal. If approved, the proposal will take effect following completion of the new campus. It is planned to complete the new building during the 2018/19 school session. This planned completion date may change as a result of a variety of factors such as obtaining planning permission, procurement and progress with construction.

Within this consultation paper you will find information about the proposal, the reasons behind it, its likely impact and how you can tell us what you think about it. A short questionnaire is included within the proposal. We hope that as many of you as possible will complete the questionnaire. We would like to thank you in advance for taking the time to share your views as they are extremely important to us.

We are planning to build a new primary school campus on the site of the former Hopefield Primary School in Bonnyrigg. We are proposing that one element of this new campus will be the relocated St Mary's Roman Catholic Primary School, including nursery. The rest of the campus will provide additional non-denominational capacity for Burnbrae Primary School. We are proposing that this additional capacity will be used to provide Early Level education and accommodate all nursery and Primary 1 pupils. We propose to create four classes to accommodate 90 Primary 1 children along with 80 nursery places and appropriate provision for pupils with additional support needs. This model will be called "Burnbrae Early".

The Hopefield campus will be located on Rosewell Road, at a distance of less than 1km/around half a mile by walking route from the existing Burnbrae Primary School building at 144 Burnbrae Road.

We are undertaking a separate consultation on the relocation of St Mary's Roman Catholic Primary School from 62A Polton Street to the new Hopefield campus. This is taking place at the same time as this consultation.

The site of the Hopefield campus is situated within the catchment area of Burnbrae Primary School. As a result, the relocation of the nursery and Primary 1 classes will not require any change to Burnbrae Primary School's catchment boundary.

If approved, the proposal will mean that:

- Burnbrae Primary School will operate over two sites under the management of one head teacher;
- all nursery and Primary 1 school pupils attending Burnbrae Primary School will attend the Hopefield campus on Rosewell Road, and
- all Primary 2 to Primary 7 school pupils attending Burnbrae Primary School will attend the existing school building on Burnbrae Road.

## Proposal

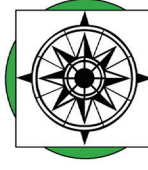
We have undertaken a number of informal pre-statutory consultation activities with parents, staff, elected members and the community in arriving at this proposal. We have considered a wide range of options which are set out in this consultation proposal paper. As a consequence of these activities, we believe that the Burnbrae Early model that is set out in this proposal delivers the greatest educational benefit and is the most viable, reasonable and sustainable option available to the Council. It is also the option that has the overall support of staff and parents who took part in the pre-consultation activities. It is for these reasons that the Council is proposing to provide additional non-denominational capacity for Burnbrae Primary School at a new campus on the site of the former Hopefield Primary School in Bonnyrigg and use this additional capacity to provide Early Level education for all children at nursery and Primary 1 through Burnbrae Early. We propose to relocate the nursery and Primary 1 classes when the new campus is ready for occupation. Building completion is currently planned for school session 2018/19.

# CATCHMENT MAP

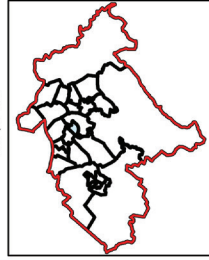
## MIDLOTHIAN NON-DENOMINATIONAL PRIMARY SCHOOL CATCHMENT AREAS

- Burnbrae Primary School**
- Burnbrae Primary School
  - Non-Denominational Catchment Areas
  - Burnbrae Primary School Catchment
  - Hopefield Campus

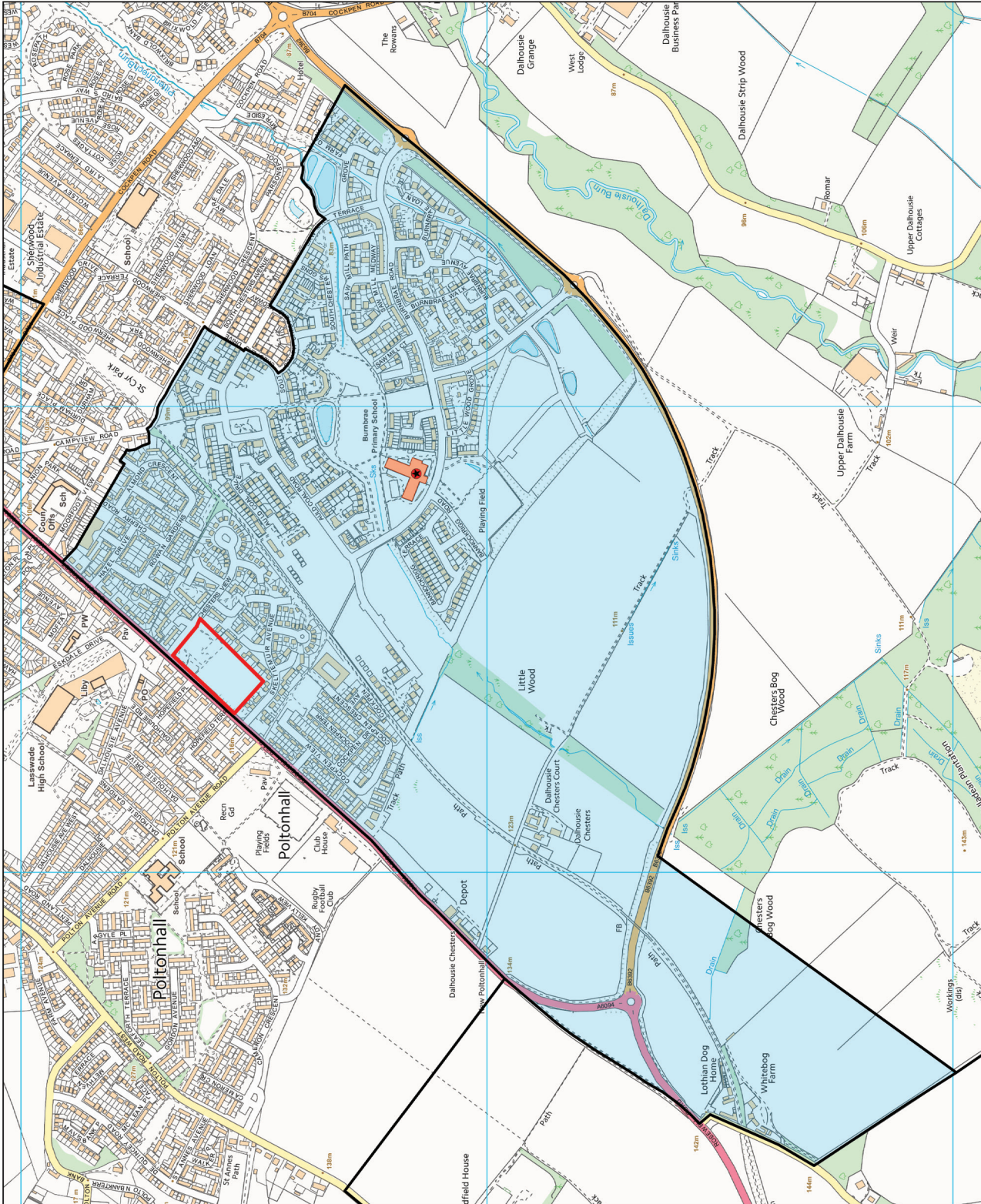
© Crown copyright and database right (2017).  
All rights reserved. Ordnance Survey  
Licence Number 100023416.



1:7,500



Education  
Fairfield House, Dalkeith  
Lothian Road, EH22 3AA  
12th April 2017



## Education Benefits Statement

Under the terms of the Schools (Consultation) (Scotland) Act 2010, as amended by the Children and Young People (Scotland) Act 2014, we have a duty to set out an educational benefits statement within the proposal. The educational benefits statement should describe the benefits of the proposal for children and young people affected by it. It should also include an assessment of the impact the proposal might have on the pupils of any affected schools and children likely to become pupils at the schools.

If this proposal is implemented, Burnbrae Primary School will operate over two sites, Burnbrae Road and the Hopefield campus, with all nursery and Primary 1 pupils attending the Hopefield campus on Rosewell Road and all Primary 2 to Primary 7 pupils attending the existing school building on Burnbrae Road. The school will operate under the management of one head teacher and there will be a deputy head teacher at each site. The principal educational benefits of this proposal support Midlothian Council's commitment to raise educational attainment for all and ensure that all children and young people have the best opportunities in life. The benefits for children affected or likely to be affected by this proposal are outlined below.

### What are the educational benefits?

The provision of Early Level education for children in nursery and Primary 1 at Burnbrae Early on the new Hopefield campus will have a number of significant educational benefits. These are:

- The new campus will have excellent facilities to meet the needs of the Burnbrae Early model with purpose-designed early years spaces, spacious classrooms, breakout areas and attractive outdoor areas. These will all contain modern equipment and technology, designed to support the delivery of high quality teaching and learning of the Early Level of the Curriculum for Excellence.
- The facilities will be tailored specifically to the needs of Early Level children and vitally allow learning through experimentation and play, taking into account the latest research and best practice for the early years of children's lives.
- It presents an opportunity to be creative and innovative in how the children and staff in the nursery and Primary 1 years can work together to share spaces, experiences and learning for the benefit of all. Specialised early years/Early Level (nursery and Primary 1) staff can collaborate to design learning experiences, coordinate focused interventions based on shared intelligence about each learner's progress across the early stage and ensure proper inclusion for all learners.
- As a dedicated early years site for Burnbrae there is an opportunity to develop the family learning approach in place elsewhere in Midlothian specifically for the Bonnyrigg and Lasswade area: open to parents coming in, engaging with and bringing together families and the community from an earlier age.
- The family learning approach will enable the centre to focus on early intervention strategies, seeking to put supports in place for children and their families early thus reducing the longer term impact on children and families and improving longer-term educational outcomes.
- The purpose-built facility will be designed with the increase to 1,140 hours early learning and childcare by 2020 in mind, reducing disruption to children and staff.
- Close working between nursery and Primary 1 will enable excellent transition from nursery to Primary 1 for children, continuing the play based environment which research shows is a better early year's strategy and also allowing a more flexible approach in preparing children for the next level of Curriculum for Excellence in Primary 2. Burnbrae Early will also offer focussed and appropriate opportunities to support children with additional support needs in their transition from nursery to Primary 1.

- None of the children who attended Hopefield Primary School and moved to Burnbrae Primary School in 2012 would move back to the Hopefield campus.
- Having all of early years on one site will mean there is equity of play provision, with all resources and staffing across the early years together rather than being split proportionately between two sites.

In addition to the educational benefits outlined above, there are a number of additional benefits that this proposal will bring. There is significant house building underway in the Bonnyrigg and Lasswade area and this proposal provides additional capacity for children who wish to attend their local school. This will maintain the opportunity for the social groups and friendships which form at the weekends, evenings and holidays that aid social cohesion and learning, positive learning environments and a community ethos.

The new campus is on the former site of Hopefield Primary School on Rosewell Road in Bonnyrigg. By using the non-denominational capacity at Hopefield campus as additional capacity for Burnbrae Primary School no changes to the catchment areas of other schools in Bonnyrigg and Lasswade will be required at this time.

The proposal will relieve the pressure on capacity at Burnbrae Primary School and its nursery so that it will be able to provide places for pupils coming forward from its catchment area, including the Hopefield Farm housing development.

The walking distances from home to both school sites for the majority of houses in the Burnbrae Primary School catchment area will be less than half a mile and only a very small number will be over a mile to the Hopefield campus. The Hopefield Farm development includes a network of safe walking and cycling routes.

### **What is the likely impact on current and future pupils of affected schools?**

- If the campus is finished as planned in 2018/19 children currently attending the nursery at Burnbrae Primary School as 3 year olds in academic year 2016/17 may move to the Hopefield campus for Primary 1 in 2018/19. They will then attend the Burnbrae Road site for Primary 2 in August 2019. This applies to children born between 1/3/13 and 28/2/14.
- Children who start nursery as 3 year olds in academic year 2017/18 may move to the Hopefield campus for their 4-year-old place at nursery in 2018/19 and will attend there for Primary 1 in 2019/20. They will then move to the Burnbrae Road site for Primary 2 in August 2020. This applies to children born between 1/3/14 and 28/2/15.
- The two years of children discussed above, along with children yet to start nursery, who have a sibling in another school year will be at a different site from their sibling for up to 3 years. Children one school year apart will be separated for one year, two years for two years apart and 3 years for all others.
- With the school on two sites some siblings who are at different sites would have to travel further to get to school if they accompany their sibling(s) to one site then travel to their own. We will explore with parents and carers potential solutions to this to include walking busses or staggered start and finish times. Final arrangements will be devised and agreed by the school with input from parents.
- While the transition from nursery to Primary 1 will be eased, the model will create a transition between Primary 1 to Primary 2. We will take steps to ensure that this transition will be carefully and sensitively managed to ensure that children's social and educational needs are met. For example, links with Primary 3 classes learning within the same level would help ease this transition and offer good peer learning opportunities.

- We will hold regular combined campus events to ensure that children at nursery and Primary 1 are engaged and included in activities of the whole school.
- Children attending a nursery other than the Burnbrae Primary School nursery will have two transitions in two years: transitioning from the nursery to the Hopefield campus for Primary 1, then moving to the Burnbrae Road site for Primary 2 onwards. The increase in places available at Burnbrae nursery will reduce the number of children attending other nurseries.
- Opportunities for peer learning such as the Primary 7 buddy system and having older role model pupils for the nursery and Primary 1 pupils will be maintained through planning and scheduling by the school as is currently the case. As the sites are not far apart travelling between them would not be an impediment to this, and would link in with encouraging physical activity. It is noted that there is no direct access between the sites so pupils will need to be escorted by school staff if they are to move site during the school day, and this will take time, although coordination with physical activity programmes would minimise the loss of lesson time.
- All significant school events, such as the sports day, Christmas events etc. will be whole school events with all pupils brought together on one site. Where events such as parents' evenings would be over the two sites for parents with more than one sibling at the school, the school would need to be flexible to accommodate this in order to maintain parents' involvement in their children's education.
- Support staff will still have the flexibility to support children across the site at which they are based, i.e. nursery and Primary 1 or Primary 2 to 7, and could move between sites in different years to maintain continuity for children.
- The number of children attending the Burnbrae Road site at any one time will increase to 540 and the school will need to be adapted to accommodate these numbers.
- Reinstating a school on the former Hopefield Primary School site will increase pedestrian and vehicular traffic in the surrounding area at drop off and pick up times.
  - o The Hopefield campus is on Rosewell Road, the A6094, which is the main route through Bonnyrigg.
  - o In the 2016 school travel survey, 33% of nursery and 13% of primary pupils at Burnbrae were driven to school whereas, in part due to its larger catchment area, 31% of nursery and 34% of primary pupils at St Mary's were driven.
  - o The Hopefield Farm development has been laid out with no direct road access to the rest of Bonnyrigg and Lasswade so travelling between the Burnbrae Road site and the Hopefield campus will be considerably longer by road than walking or cycling.

The Council will work with the police, pupils, parents and the local community to ensure that healthy and safe routes to school are established to encourage walking/cycling/scooting to school and "park and stride" for all those for whom it is an option to minimise the potential for congestion at drop off and pick up times.

## Integrated Impact Assessment

An integrated impact assessment is being undertaken as part of the consultation as it is important to understand how the needs of different groups may differ. Integrated Impact Assessment is a tool which enables the Local Authority to consider the needs of different groups. It enables it to:

- Develop better policies and practices, based on evidence
- Prevent or mitigate negative impacts on affected groups
- Take effective action on key social policy areas including equality and human rights, poverty and the economy
- Meet legal requirements in relation to equality, sustainability and the environment and the need to promote human rights in all areas of life
- Consider the potential to advance/hinder the wellbeing of children and young people
- Be more transparent and accountable

The Local Authority is required by legislation to assess its proposals for equality impact to ensure that it does not unlawfully discriminate.

Midlothian Council will continue to consider the implications of this proposal in relation to equality, to reflect any issues raised in writing or oral representation made as part of the consultation process. The result of the Integrated Impact Assessment will be included in the final consultation report.

## Background Information

The Education (Scotland) Act 1980 gives education authorities (i.e. Midlothian Council) a statutory duty to “secure that there is made for their area adequate and efficient provision of school education”. This duty requires Midlothian Council to ensure that there are sufficient school places for children coming forward and to do so in an efficient way.

### Site requirements for schools

The Bonnyrigg/Lasswade area has over 7,300 homes that are served by four non-denominational primary schools, Burnbrae, Bonnyrigg, Hawthornden and Lasswade Primary Schools, one denominational school, St Mary’s Roman Catholic Primary School and one secondary school, Lasswade High School.

In addition to the houses yet to be built at Hopefield Farm, the Local Development Plan proposes a further allocation of 1,090 houses for Bonnyrigg/Lasswade spread across the settlement; 660 units in the catchment of Bonnyrigg Primary School, 375 in the catchment of Burnbrae Primary School (at housing development site Hs12, with an additional 375 houses expected in the longer term) and 55 in the catchment of Lasswade Primary School. Meeting the demand for primary school places from the allocated sites will require additional capacity to be provided. The proposed Local Development Plan envisages that this will be provided by way of an extension to Lasswade Primary School and an additional primary school on housing development site Hs12 combined with a review of school catchment areas. Analysis of the pupil numbers coming forward from the Hopefield Farm development indicates that additional capacity is also required for Burnbrae Primary School.

The Hs12 housing development site is to the south west of Hopefield Farm and extends to the distributor road to the south and west and to the A6094 to the north.

	Total Catchment Properties 2016	Catchment Primary Pupils 2016	Projected Catchment Properties	Peak Projected Catchment Rolls	School Capacity 2016
Bonnyrigg	1,463	396	2,133	730	459
Burnbrae (excl Hs12)	1,586	449	1,842	770	459
Hs12			750	350	
Hawthornden	2,110	422	2,152	470	434
Lasswade	2,160	288	2,249	450	367
St Mary's					263
<b>Total</b>	<b>7,319</b>	<b>1,555</b>	<b>9,126</b>	<b>2,770</b>	<b>1,982</b>

By May 2016 1,100 houses had been completed on the Hopefield Farm development with a further 200 or more houses to be built. The numbers of pupils from these new houses attending a Midlothian school was 50% more than originally predicted and resulted in a surge in the primary intake particularly for Burnbrae Primary School. In August 2016 there were 80 Primary 1 pupils in the Burnbrae catchment, 20 pupils more than the school is designed to accommodate.

Table: Hopefield Farm – Pupil Product based on Pupil Census Data

	Units	Pupil Product	Pupils
Original Assumption	1,100	0.28	308
Additional units	200	0.28	56
	<b>1,300</b>		<b>364</b>
Current pupil product	1,300	0.43	559

(The pupil product is the average number of children coming forward from each house.)

The expectation is that the total number of pupils from the Hopefield Farm development will reduce by as much as 50% over time as the development matures and many families continue to live in these houses once their children are beyond school age. It is our experience that this occurs over a twenty-year period following completion of new housing. This will result in the pupil roll of Burnbrae Primary School, excluding the impact of any further housing development, settling back to approximately 400 pupils.

Over the next ten years however, assuming the current proportion of pupils from Burnbrae's catchment area choosing to attend St Mary's remains the same, the primary pupil numbers at Burnbrae are projected to rise towards 700 pupils.

2017	2018	2019	2020	2021	2022	2023	2024	2025	2026	2027
398	445	487	523	552	589	621	647	665	677	686



By 2021 the pupil projection forecasts an annual cohort of 100 pupils from the Burnbrae catchment area, excluding further development at Hs12. The maximum practical Primary 1 intake in a three-stream school is 90 pupils and 120 pupils in a four-stream school. Once the number of pupils coming forward exceeds the maximum school intake a cap on the pupil intake is applied.

An “informal” or “pre-” consultation was carried out at the end of 2015 and start of 2016 to gather feedback and ideas from parents, carers and the community about options for this area and in particular the educational use to be made of the former Hopefield Primary School site.

Five options were identified which related to providing additional non-denominational capacity for the area that would provide places for some of the pupils coming forward from the Burnbrae catchment area:

- Two stream non-denominational school at Hopefield.
- Joint campus one stream denominational and one stream non-denominational school at Hopefield.
- Two or three stream non-denominational school at Hs12 development.
- Extend Burnbrae Primary School to three streams.
- Extend Hawthornden Primary School to three streams.

Following the pre-consultation it became clear that the additional capacity would be required by August 2018, in order to alleviate the emerging pressure on places at Burnbrae Primary School.

Officers explored the possibility of expanding Burnbrae Primary School on its current site. It was found that this was not possible as the building structure is not suited to building another storey and the site is constrained and would take a significant amount of time and resource to enlarge, not least the agreement of every homeowner in the Hopefield Farm development. As a result it would not be possible within the required timescale and carried a high risk of not being successful in any case.

Building additional capacity across the road from the school on the site known as the “bowling green” was also found to not be possible for the same reasons that the current school site cannot be enlarged.

An alternative solution was to provide the additional capacity on the development site at Hs12 as the proposed Local Development Plan envisages that an additional primary school will be provided there. However the additional capacity needed to be available by August 2018 and that could not be guaranteed on Hs12 as the Local Development Plan had not been adopted at that time.

The Hawthornden school site at 1.8 hectares proved to be too small for a three-stream school and nursery.

It was clear at this point that the only solution within the control of the Council that could be delivered by August 2018 was to build on the former Hopefield Primary School site. As a result the elected members considered the paper “Educational use of the former Hopefield Primary School site” at Council on 17th May 2016 and decided to build a 2-stream (459 pupil capacity) non-denominational primary school plus nursery at Hopefield. The elected members also decided in principle to replace St Mary’s Primary School.

In the following months officers sought a suitable site in the Bonnyrigg area for a replacement St Mary’s that could be delivered in the short-term. No site was identified.

Rebuilding or refurbishing St Mary’s on its existing site was also considered at this point. To address the size of the site officers looked at adding the adjoining Dundas Building site to St Mary’s. However the whole of the Dundas and St Mary’s site is approximately 8,600 square metres, which is less than the specified site area of 10,280 square metres for a single stream (242 pupil) school with a 30-place nursery. In addition, the costs of bringing all maintenance up to date, refurbishing and revising the existing building to align it with modern education delivery would be significant and would create considerable disruption to pupils.

Council considered the report “School Estate Capacity and Pupil Intake Limits – School Session 2017/18” on 20th December 2016. The paper included a proposal to make the two-stream school at Hopefield part of Burnbrae Primary School. Elected members voiced concern that the future of St Mary’s Primary School had not been addressed and suggested reconsideration of a joint denominational and non-denominational school campus on the Hopefield site. Council decided to continue the discussion in relation to primary school provision in Bonnyrigg to the Council meeting in February 2017 and instructed officers to arrange a meeting of the Ward Councillors, Religious Representatives, and Council officers and thereafter provide a further report.

Following the meeting arranged as per the December decision a further “Educational use of the former Hopefield Primary School Site” paper was presented to elected members at Council on 7th February 2017. The decision of elected members at this meeting was to revise the May 2016 decision and make the new school at Hopefield a joint campus with one element a replacement St Mary’s Roman Catholic Primary School and the other non-denominational, for use as additional capacity for Burnbrae Primary School.

**Options considered for use of additional non-denominational capacity at Hopefield**

The decision of February 2017 Council will increase the capacity of Burnbrae Primary School to three streams. The detailed roll projection in the table below showing Burnbrae as a three-stream school is based on an intake limit of 90 pupils applying from 2021, and assumes no further housing development in the Burnbrae catchment.

	P1	P2	P3	P4	P5	P6	P7	Total
2017	75	66	59	61	54	46	37	398
2018	84	75	66	59	61	54	46	445
2019	88	84	75	66	59	61	54	487
2020	90	88	84	75	66	59	61	523
2021	90	90	88	84	75	66	59	552
2022	90	90	90	88	84	75	66	583
2023	90	90	90	90	88	84	75	607
2024	90	90	90	90	90	88	84	622

When the number of pupils arising exceeds 90 school places will need to be provided elsewhere. The Local Development Plan makes provision for an additional school at the Hs12 development site. Based on the current house building programme it is anticipated that the school at Hs12 will be required in 2021.

## Separate single stream non-denominational school

Given the long term decline in pupil numbers from new housing developments it is important to plan the provision of school capacity to ensure schools are sustainable by way of pupil roll, recruitment of head teachers and teachers, delivery of the full range of educational opportunities and the effective use of resources. This has a number of implications for planning the provision of schools and nurseries, including seeking to avoid building small schools close to each other which become unsustainable in the longer term when a smaller number of larger schools provide more flexibility to adjust capacity as the pupil numbers change, with the minimum of disruption.

As stated earlier the expectation is that the total number of pupils from the Hopefield Farm development will decline by as much as 50% over a twenty year period following completion of the new housing. This will result in the pupil roll of the Burnbrae catchment, excluding the impact of any further housing development, settling back to approximately 400 pupils.

If the additional non-denominational primary school capacity at Hopefield were set up as a separate single stream school a catchment area would be created to take in approximately one third of the pupils in the current Burnbrae catchment area. Due to its location this would include the older housing stock and approximately one fifth of the Hopefield Farm development. When the new housing matures and the pupil numbers fall back the school at Hopefield would be operating at less than 70% capacity and Burnbrae at less than 50%.

In addition, a very high proportion of pupils at Burnbrae have siblings at the school and this would make the administration of pupil numbers challenging, with a very high number of placing requests from the new school in to Burnbrae for a number of years, most of which would have to be refused.

As a result of these factors creating a separate single stream non-denominational school on the Hopefield site would be neither sustainable nor present best value.

## Additional capacity for Burnbrae Primary School

Different models for the use of the additional capacity were evaluated and three emerged as viable: Early Level, Second Level and nursery to P7. Broadly, the Early Level stage of the Curriculum for Excellence is at nursery and Primary 1, the First Level is at Primary 2 to Primary 4 and the Second Level is at Primary 5 to Primary 7.

### Burnbrae Early

With the capacity at the two sites split with roughly two thirds at the current Burnbrae Road site and one third at Hopefield campus the Early Level model at Hopefield campus consists of nursery and Primary 1 with Primaries 2 to 7 at the Burnbrae Road site.

The educational benefits and the impact of this model are fully set out earlier in this document.

### Second Level

The Second Level model at Hopefield consists of nursery to Primary 4 at the Burnbrae Road site and Primaries 5 to 7 at Hopefield campus.

This model would have the Hopefield campus as a stepping-stone for children in Primary 5 to 7 on their way to secondary school, geographically, educationally and in developing maturity and independence.

The classroom set up would be tailored to the educational stage of these older pupils at the Second Level, for example with greater emphasis on science labs or equipment.

Children would have an additional transition between Primary 4 at Burnbrae Road to Primary 5 at Hopefield campus however they would be around ten years old when they transitioned from one site to the other, compared to six years old in Burnbrae Early.

The children who moved from Hopefield Primary School to Burnbrae Primary School in 2012 would move back to Hopefield campus.

Siblings could be separated on different sites for up to three years.

Buddying of younger children by older children would be carried out in the same way as Burnbrae Early.

In Primary 4 and 5 pupils in each class would be at different levels in Curriculum for Excellence and some pupils would be on a different site to the majority of children at their level.

From the perspective of drop off and collection, the younger children would be at the Burnbrae Road site, central to the catchment area, and the older children at Hopefield campus with, on average, slightly further to walk. As children become more independent as they get older fewer children would have been escorted or driven to Hopefield campus than under the Burnbrae Early model, reducing potential congestion.

A number of primary classrooms at Burnbrae Road would need to be adapted for use as nursery.

### **Nursery to Primary 7**

In this model a separate stream of nursery and primary classes would attend Hopefield campus, i.e. one class each of nursery to Primary 7, with two streams of nursery and primary classes remaining at the Burnbrae Road site.

The stream at Hopefield campus would fill with new intakes of nursery and Primary 1 children each year along with older children who choose to move to the campus. Children already at the Burnbrae Road site would not be required to move.

There would not be an additional transition for pupils within their primary years.

As the capacity at Hopefield campus would be nursery and generic classes the space would be more flexible for different use as the roll builds up and in the long term.

There would be a full range of nursery and Primary 1 up to Primary 7 at both sites, with the social benefits this brings, and buddying arrangements for older and younger children would be maintained without moving from one site to another.

The school within a school approach could apply within each site.

Staff could move up and down through the years of the school without changing site.

Initially this model appears to minimise the potential for siblings to be separated and therefore only one drop off and pick up for parents, one parents evening etc, however there would be a significant challenge to balance the demand for places at the two sites with their capacity. This model would therefore require a clear policy on priority for places in order to objectively split pupils between the two sites, e.g. by special circumstances, siblings, distance etc., given the aforementioned high proportion of pupils with siblings at the school. While an informal catchment area could be created for each of the sites, in the short to medium term there would be far more children seeking to attend Burnbrae Road as they have siblings there than the site has capacity to accommodate. This would require the informal catchment area to be sized during the Primary 1 registration process to balance the pupil numbers with capacity. Each year the area required to achieve this would be different, leaving parents with children yet to start school uncertain over which site their children, and the children of their neighbours, would attend.

Teachers with classes at the same stage would be on different sites, making it more difficult to collaborate on lesson planning and delivery, organising events, activities and trips.

Pupils at the same stage would be on different sites, potentially separating friends, relatives and neighbours. As both sites would have children of all ages, resources would need to either be split across the two sites or duplicated, which could lead to inequality of access.

This model requires an additional teacher as the maximum number of pupils in a class changes as children get older and each year of children is split across two sites.

## Pre-Consultation – Educational Benefits of the Models

In February and March 2017 pre-consultation was carried out with parents, carers, staff and the community on how the additional capacity at the Hopefield campus should be used by Burnbrae Primary School. Through this pre-consultation all those engaged considered the educational benefits and adverse effects of three potential models: Burnbrae Early; Second Level; and nursery to Primary 7, and could put forward alternative models, along with educational benefits and adverse effects for them.

Alternatives put forward were:

- Extend the existing school.

As discussed earlier in this document, due to the constraints of the site and building structure, this is not feasible.

- Build a separate nursery across the road.

As discussed earlier in this document, due to the constraints of the site across the road, this is not feasible.

- Re-evaluate criteria so only local children attend.

When the Primary 1 intake for a school becomes full, children who live in the catchment area are given priority over those who do not therefore this is already in place. The number of Primary 1 children living in the catchment area already exceeds the school's current capacity and this is forecast to increase, so this model does not remove the need for additional capacity.

During the pre-consultation a number of parents proposed using the non-denominational capacity at the Hopefield campus for a separate primary school with its own catchment area. As discussed earlier in this proposal, for a variety of reasons this is not the most viable and sustainable option open to the Council.

The pre-consultation discussed the educational benefits and adverse effects of all three models. During the pre-consultation, surveys of Burnbrae Primary School staff and parents were carried out and in all three the Burnbrae Early model was the preferred option, getting the support of 79% of staff, 82% of parents in a ballot and over half of parents in an online survey.

The feedback from the pre-consultation including the educational benefits and adverse effects of all three models was gathered and considered, and form the basis of the educational benefits and discussion in this document. The balance of the educational benefits means that the Burnbrae Early model is the most viable and reasonable option available to the Council and is the option that has the overall support of staff and parents. For these reasons, the Council is proposing to provide additional non-denominational capacity for Burnbrae Primary School at a new campus on the site of the former Hopefield Primary School in Bonnyrigg and use this additional capacity to provide Early Level education for all children at nursery and Primary 1 through Burnbrae Early.

## The Public Consultation

The Schools (Consultation) (Scotland) Act 2010 sets a duty for all councils to consult with the community if they propose to relocate part of a school.

Within the context of this proposal, the statutory consultees are:

- a) The parent council of Burnbrae Primary School
- b) The parents of pupils at Burnbrae Primary School
- c) The parents of any children expected to attend Burnbrae Primary School within two years
- d) The pupils at Burnbrae Primary School
- e) The staff at Burnbrae Primary School and any trade union representatives
- f) The Community Councils of Bonnyrigg and Lasswade, and Poltonhall and District
- g) Midlothian Community Planning Partnership

The consultation period will run for six weeks from 8th May to 20th June 2017. The proposal paper will be made available electronically on the Midlothian Council website and in paper format at Burnbrae Primary School and The Lasswade Centre. A public meeting will be held in respect of the proposal at the venue listed below.

Venue	Date	Time
<b>Burnbrae Primary School</b>	<b>Wednesday 31st May</b>	<b>7:00-8:30pm</b>

If you wish your views to be taken into consideration, **your response to the consultation must be received by Tuesday 20th June 2017**. These can be returned to any Midlothian library or school, emailed to [educationconsultation@midlothian.gov.uk](mailto:educationconsultation@midlothian.gov.uk) or posted to Sandra Banks, Midlothian Council, Education, Communities & Economy, Freepost SCO 622, Dalkeith EH22 OBR.

Once the consultation period is over, the Schools (Consultation) (Scotland) Act 2010 requires HM Inspectors of Education to prepare a report on the educational aspects of the proposal and submit this report to the Council within three weeks (or longer if agreed). In order that it can do so we must send to HM Inspectors of Education at Education Scotland:

- a copy of the proposal paper,
- copies of written representations received by the authority during the consultation period, and
- a summary of any oral representations made at the public meeting.

We will then prepare and publish a consultation report in both electronic and printed form. The report will be made publicly available and notification will be given to those who have made representations during the consultation period. The report will take into consideration:

- written representations received by the authority during the consultation period,
- oral representations made at the public meeting, and
- the report from HM Inspectors of Education.

Once we have published our final consultation report, we have a duty to wait three weeks from the date of publication of the report before the Council makes a decision on whether to progress with the proposal either in whole or in part. We anticipate that the consultation report, setting out recommendations, will be presented to the meeting of the full Council to be held on the 26th September 2017.

# Questionnaire

In which non-denominational catchment area do you reside?					
Bonnyrigg	Burnbrae	Hawthornden	Lasswade	Other	Unknown
<b>Address:</b>					

What is your age group?				
0 to 11 years	12 to 17 years	18 to 60 years	Over 60 years	Not applicable

**Proposal**  
 Use the additional capacity at the Hopefield campus, Rosewell Road, Bonnyrigg, for nursery and Primary 1 for Burnbrae Primary School

**Please make your comments on this proposal in the space provided below**



**Any additional comments?**

Large empty rectangular box for providing additional comments.

Your Name (optional): . . . . .

Your Contact Details (optional): . . . . .

Your School/Nursery (optional): . . . . .

**Completed questionnaires must be received by 20th June 2017** and can be returned electronically to [educationconsultation@midlothian.gov.uk](mailto:educationconsultation@midlothian.gov.uk) or posted to Sandra Banks, Education, Communities & Economy Directorate, Freepost SCO 622, Dalkeith EH22 0BR.

**COMMUNICATING CLEARLY**

We are happy to translate on request and provide information and publications in other formats, including Braille, tape or large print.

如有需要我們樂意提供翻譯本，和其他版本的資訊與刊物，包括盲人點字、錄音帶或大字體。

Zapewnimy tłumaczenie na żądanie oraz dostarczymy informacje i publikacje w innych formatach, w tym Braillem, na kasecie magnetofonowej lub dużym drukiem.

ਅਸੀਂ ਮੰਗ ਕਰਨ ਤੇ ਖੁਸ਼ੀ ਨਾਲ ਅਨੁਵਾਦ ਅਤੇ ਜਾਣਕਾਰੀ ਤੇ ਹੋਰ ਰੂਪ ਵਿੱਚ ਪ੍ਰਕਾਸ਼ਨ ਪ੍ਰਦਾਨ ਕਰਾਂਗੇ, ਜਿਨ੍ਹਾਂ ਵਿੱਚ ਬਰੇਲ, ਟੇਪ ਜਾਂ ਵੱਡੀ ਛਪਾਈ ਸ਼ਾਮਲ ਹਨ।

Körler için kabartma yazılar, kaset ve büyük nüshalar da dahil olmak üzere, istenilen bilgileri sağlamak ve tercüme etmekten memnuniyet duyuyoruz.

اگر آپ چاہیں تو ہم خوشی سے آپ کو ترجمہ فراہم کر سکتے ہیں اور معلومات اور دستاویزات دیگر شکلوں میں مثلاً بریل (بہیمان افراد کے لیے) اور بڑے حروف کی کھائی (بہیمان، ٹیپ پر یا بڑے حروف کی کھائی میں فراہم کر سکتے ہیں۔

Contact 0131 270 7500 or email: [enquiries@midlothian.gov.uk](mailto:enquiries@midlothian.gov.uk)

We will only contact you to let you know we have published the consultation report. A copy of written representations received will be sent to Education Scotland. Your details will not be shared with anyone else and will be deleted when the consultation process is complete.

Midlothian

