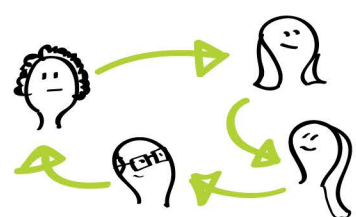


## Our vision in Glasgow Education Services is 'Towards the Nurturing City'

In March 2019 HM Inspectors evaluated the progress made in closing the poverty related attainment gap as **EXCELLENT**

### 1 WHY NURTURE IN GLASGOW?

RECOGNITION THAT SUPPORTS OFFERED **WITHIN LOCAL SCHOOL COMMUNITIES** have the best impact



Enhancing our **understanding** of the importance of **RELATIONSHIPS** IN EDUCATION



**UNDERSTANDING BARRIERS** caused by poverty, disadvantage and social exclusion.



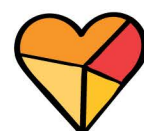
Changing our view of what helps **CHILDREN & COMMUNITIES TO FLOURISH**

### 2 WHAT DID WE DO?

Started small and scaled up



RESEARCHED THE IMPACT OF NURTURE IN GLASGOW:  
improved behaviour, improved achievement, improved wellbeing



Invested in city WIDE TRAINING AND SUPPORT FOR STAFF

SELF-EVALUATION AND QUALITY ASSURANCE are key aspects of improvement in NURTURE



Targeted NURTURE GROUPS in all sectors

WHOLE SCHOOL APPROACHES – all staff understand the principles of NURTURE.



### 3 TOWARDS THE NURTURING CITY...



SHARING EXPERTISE ACROSS THE UK

NURTURING approaches are a priority for **EDUCATION SERVICES IN GLASGOW**



Extending partnerships to build nurturing and inclusive communities

"We know we are valued"

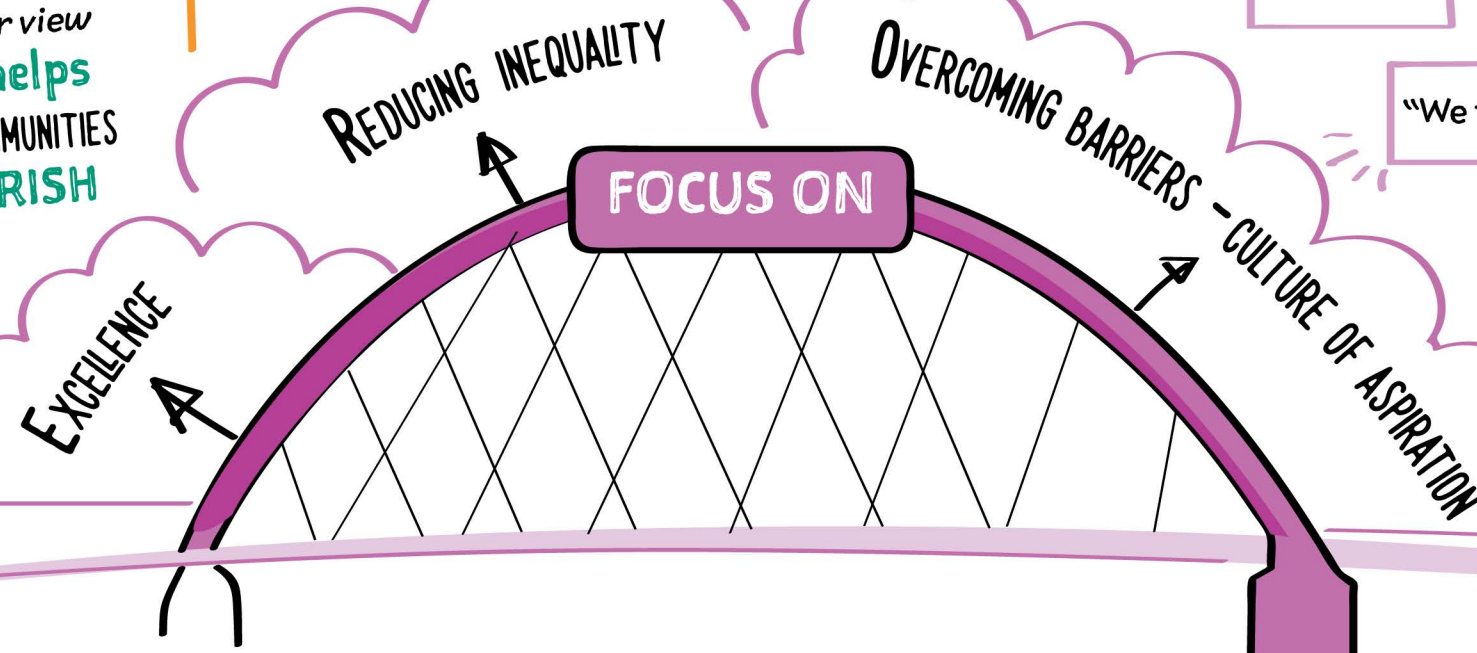
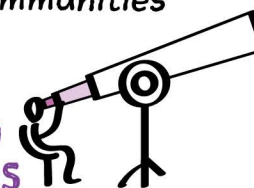
"We are listened to"

LISTENING TO **children**

"We feel we belong"

LOOKING FORWARDS

ensuring practice is current and sector leading



NURTURING GLASGOW  
nurture: at the heart of glasgow

