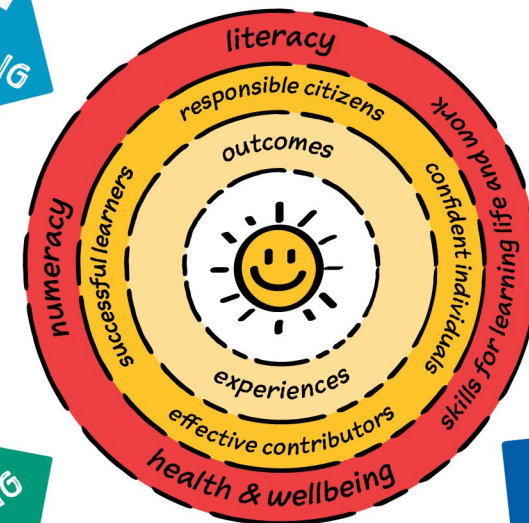


Are our processes **HAVING AN IMPACT** *on* **OUR CHILDREN & their families?**

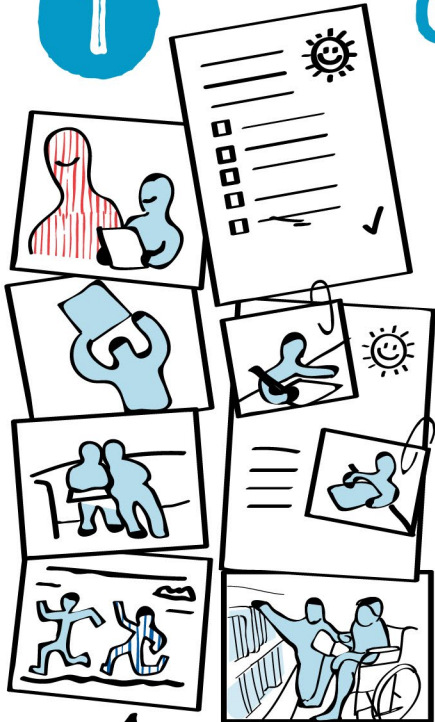
Riccarton Early Childhood Centre

HIGHLY EFFECTIVE APPROACHES TO USING DATA TO SUPPORT LEARNING, TEACHING AND ASSESSMENT.



WHAT ARE WE GOING TO DO NOW?
"WE DON'T STOP ... we continually strive TO DO BETTER AT RICCARTON"

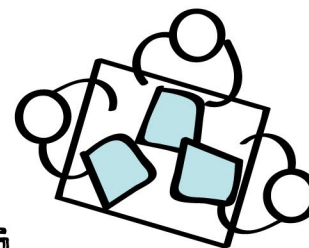
1 GATHERING



STREAMLINED assessment processes
 EFFECTIVELY USE INFORMATION *from day-to-day LEARNING* to secure children's **PROGRESS**

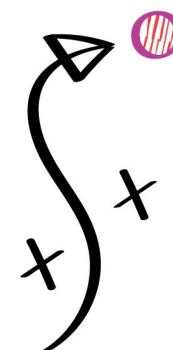
2 COLLATING

Team Moderation **FOR SOUND JUDGEMENTS** ABOUT LEARNING



3 USING

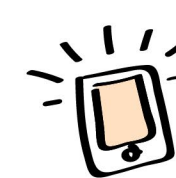
TO PLAN LEARNING and identify target groups *for support or challenge.*



4 TRACKING

Tracking children's achievements **ENSURES NO ONE IS MISSING OUT**
 Children access evidence of their achievements

USING DIGITAL TECHNOLOGY



SUPPORT WITH **TABLETS**



QR CODES TO RECORD achievement



Recall & Reflect **LEARNING**

A CLOSER LOOK AT CHILDREN'S LEARNING across playroom areas **EXTENDS CHILDREN'S LEARNING**



Children are making excellent progress **IN LEARNING**

THROUGH EFFECTIVE **use of data.**

