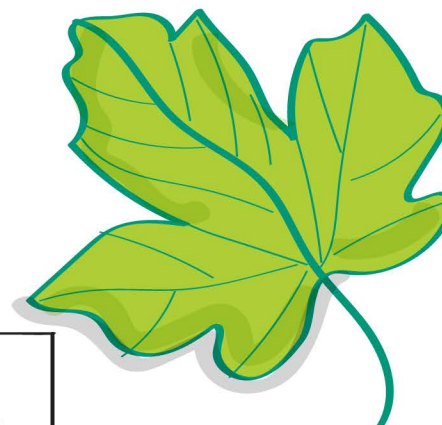


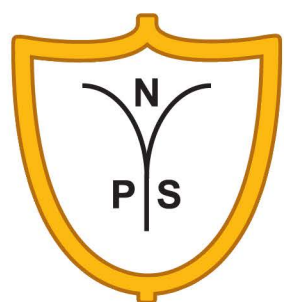
# RECOVERY UPDATE

As children and young people returned to school in August 2020, many things in education look and feel different. Here is an update from Netherthird Primary headteacher, **JEMMA DONNELLY**, about how they have moved on and adapted their practice for the current context.



## NETHERTHIRD Primary School Early Childhood Centre

OPPORTUNITIES for CHILDREN to TAKE PART in INTERESTING and MOTIVATING LEARNING ACTIVITIES using meaningful contexts and good use of outdoor spaces in the Early Childhood Centre

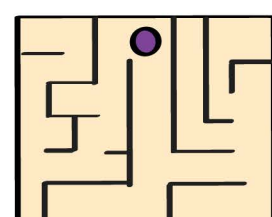


Maintaining links during lockdown was crucial for families' health and wellbeing. Our establishment collaborated to provide challenges and learning opportunities to encourage, motivate and inspire our stakeholders.

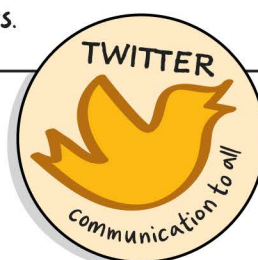
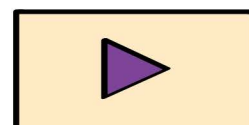
### LOCKDOWN



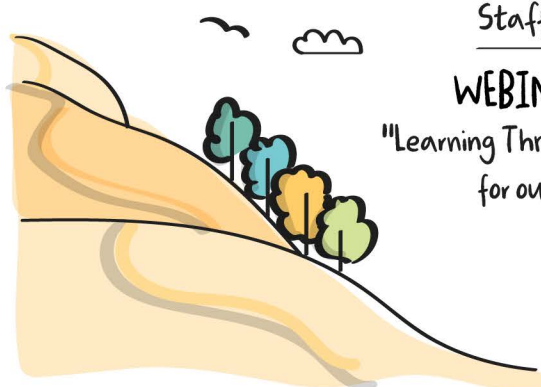
HEADTEACHER CHALLENGES



FEEL GOOD FRIDAY



DOORSTEP VISITS WERE CARRIED OUT TO ALL CHILDREN and provision of resources arranged. Children created handprints and tied ribbons to the new building gates.



Staff training included:  
**WEBINARS FOR STAFF**  
"Learning Through Landscapes" for outdoor champions.

### RECOVERY

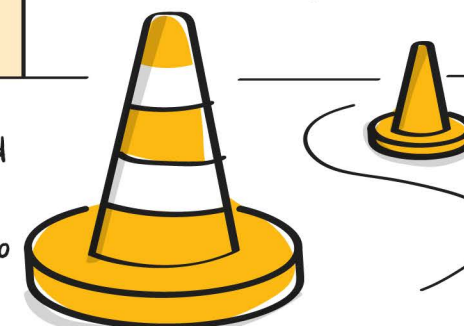
OUTDOOR PLAY to boost children's physical, cognitive, social and mental health and emotional development.



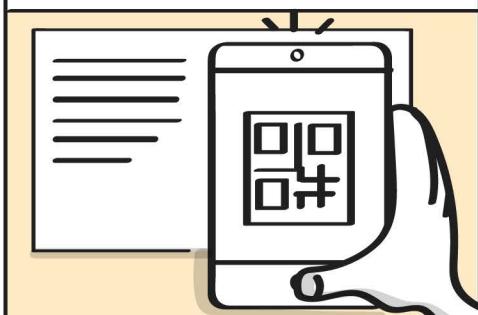
This began with socially distanced induction in outdoor space, introducing families and children to the NEW ENVIRONMENT.



OUTDOOR LEARNING continues at DUMFRIES HOUSE, focusing on managing risks, developing resilience and keeping motivated.



LANDSCAPED OUTDOOR SPACE, use of natural open-ended resources, provides provocations for children to direct their own play



INNOVATIVE SHARING METHODS of children's learning and achievements with home. These include QR codes and sway.

### IMPACT ON CHILDREN AND STAFF

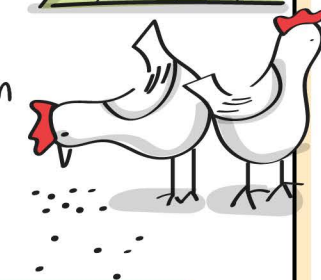
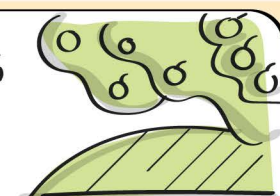
STAFF and CHILDREN HAVE ENJOYED a POSITIVE RETURN to SCHOOL



Successfully overcoming challenges and finding new ways of providing and maintaining high quality learning experiences.

MORE AWARENESS OF WHERE FOOD COMES FROM.

Linking with the community garden to rear chickens. Planting and growing fruit.



### FUTURE PLANS