

SUPPORT FOR CHILDREN, YOUNG PEOPLE AND THEIR FAMILIES to MITIGATE THE IMPACT OF COVID-19 ON LEARNING



EQUITY AUDIT

2 MITIGATING for school building closures

3 Measures to support EDUCATION RECOVERY (Since August)

1 AS SCHOOLS CLOSED

Schools worked hard to understand challenges faced by families



SAFEGUARDING of children and young people was given priority

PROVISION of DIGITAL EQUIPMENT, CONNECTIVITY and LEARNING RESOURCES

Funding from Local Authorities and Connecting Scotland grants
+ Paper-based learning packs + stationery + art supplies

REMOTE LEARNING

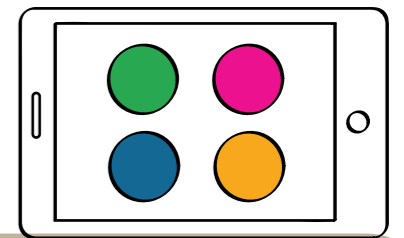
- * Digital platforms
- * Learners motivated by teacher engagement and feedback
- * Learning packs supplement and enhance on-line learning

PROFESSIONAL LEARNING AND GUIDANCE to support online learning

Some schools made 'how-to' guides and set up 'help-desks'

EXTRA FUNDING FOR STAFFING was welcomed by school staff

Commitment to ensure schools are **SAFE, OPEN AND WELCOMING**



Pupil Equity Funding was used TO PROVIDE BESPOKE SUPPORT TO PUPILS

Assessing progress and gaps in learning
FOCUSED ON EQUITY

HEALTH and WELLBEING remains a key focus as children and young people re-connect with their teachers and friends

IMPACT OF HEALTH AND SAFETY GUIDELINES

There were mixed views expressed on teaching delivery

EDUCATION RECOVERY PLANNING



Schools continue to provide wide ranging support, specific to their context

WHOLE FAMILY approach

collaborative partnerships

tailored support

Identifying the needs of pupils

Sharing information with partners

Planning provision of resources, additional support or contact

Analysis of digital needs

Regular check-ins and feedback

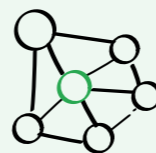
PASTORAL SUPPORT AND COMMUNICATIONS

Ongoing communication with families, particularly vulnerable families



Safeguarding of vulnerable families

Supporting families with English as an additional language to stay connected



Food insecurity mitigated by e.g. food banks

TRACKING, SUPPORTING AND SUSTAINING LEARNER ENGAGEMENT



Digital platforms

Setting expectations Time to be active

PARTNERSHIP, COLLABORATION and MULTI-AGENCY WORKING

Solution-focused community partnerships
Almost all stakeholders spoke of improved working relationships