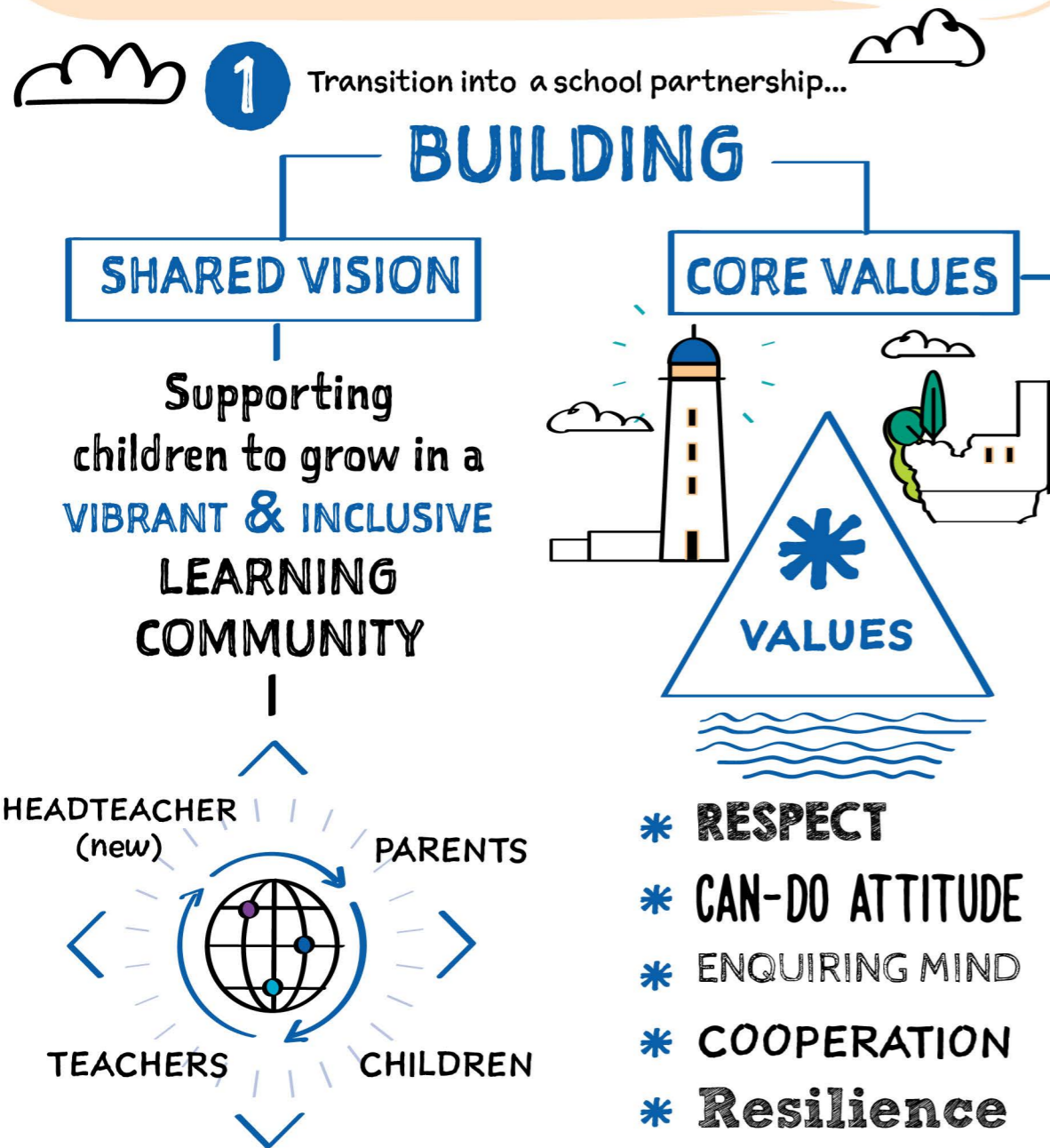




THE DEVELOPMENT OF STRONG CORE VALUES AND A SHARED VISION HAS LED TO A SUPPORTIVE LEARNING ENVIRONMENT FOCUSED ON

**CHILDREN'S WELLBEING**



**2** EMBEDDING CORE VALUES IN THE LIFE AND ETHOS OF THE SCHOOL

DAILY USE in classrooms

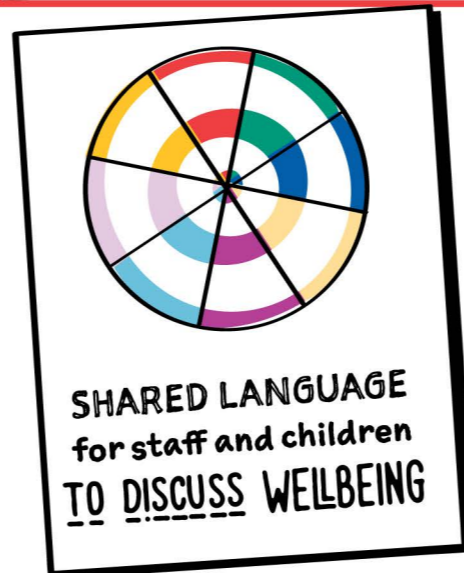
VALUE CERTIFICATES issued in weekly assemblies

Children talk about the impact on their **LEARNING EXPERIENCES**



Classes present **'VALUES' ASSEMBLIES**

**3** Core Values are linked to THE WELLBEING INDICATORS

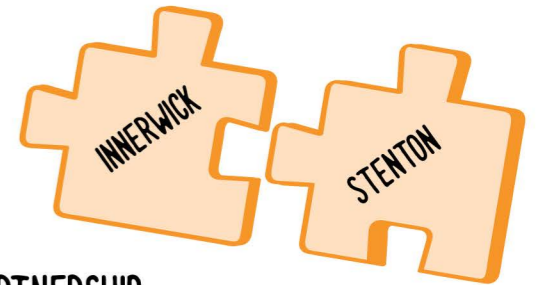


HELPS IN > RESTORATIVE SITUATIONS

Supports positive relationships with peers and adults

LEADS TO > A WARM AND FRIENDLY ENVIRONMENT

**4** Taking the vision and values BEYOND THE SCHOOL



SCHOOLS PARTNERSHIP (JOINT INITIATIVES)

FOR CHILDREN ACTIVITIES TO COME TOGETHER

FOR TEACHERS JOINT PROFESSIONAL LEARNING

FOR PARENTS: USING CORE VALUES AT HOME

