

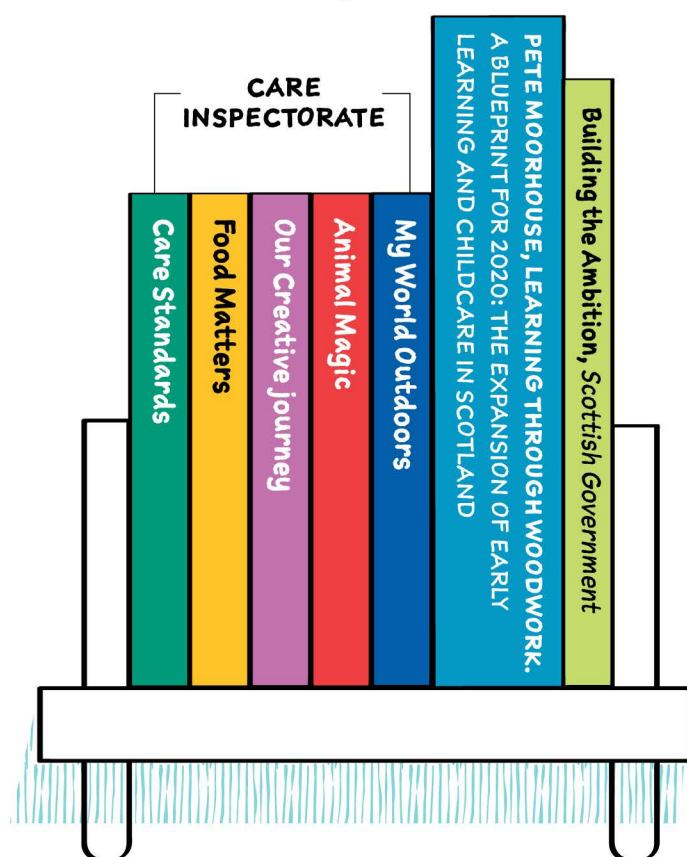
January 2020

**MID CALDER  
PRIMARY SCHOOL  
NURSERY CLASS**  
have developed their  
pedagogy, resources and  
learning environments  
**TO MAXIMISE  
OPPORTUNITIES TO  
SUPPORT CHILDREN'S  
CREATIVITY.**

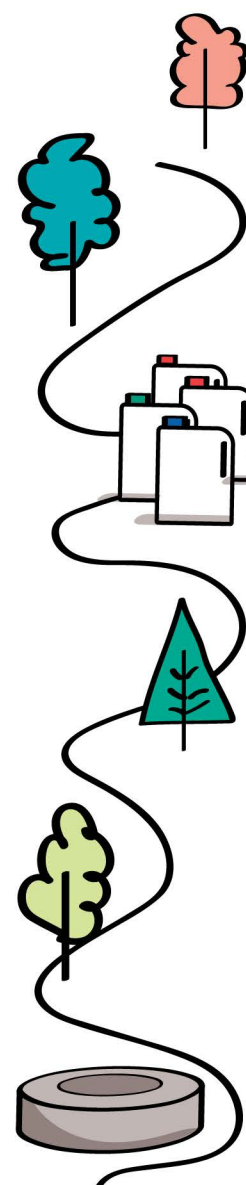
# BLOG

## MID CALDER

### Bookshelf of Reading and Research



**ALSO CHECK:**  
[How Good is our Early Learning and Childcare?](#)  
[Support for Professional Development in Outdoor Learning](#)



As a team, we strive to provide our children with a varied, enticing, natural environment. We continually explore ways to promote creativity. Our planning revolves around our children and their voices.

Our staff have a shared understanding of pedagogy through emphasis on creativity and the creation of a provocative environment to unleash children's imaginations. Our nursery team members are proactive and prompt in implementing advice and ideas. As a result, the pace and change is vibrant, continued and embedded.

We provide provocations at our loose parts to entice discovery play and encourage creativity, problem solving, teamwork and co-operation. The resources are adapted to follow the children's learning. This happens both indoors and outdoors where our children frequently display transient art displays.

By simply beating our lollipop drum, our children happily gather round to enjoy music, rhymes and songs. Our children can be often seen spontaneously playing the percussion instruments and dancing rhythmically, happily expressing their feelings.

The nursery team has embraced our outdoor environment where the children are included in making decisions. We have our own "Wild Connection" area, where children move freely with guidance. Our staff gently encourage the children to climb trees, make dens and build rafts to set free in the river.

Our children are independent, resilient and creative. They engage enthusiastically in our outdoor learning where they can independently climb, help build fires and make their own dens.

We have developed and embedded self-evaluation of practices within our setting. These are updated daily and implemented into our nursery creative and responsive practices.

Lynn Findlay (EYO) and  
Hazel Thurlow (HT)

