

An abstract geometric pattern on the left side of the image, featuring overlapping lines and shapes in shades of blue, pink, orange, and yellow, creating a complex, interconnected design.

# Creativity and Wellbeing

**Empowering learners to thrive in a  
complex and fast changing world**

**A Partnership event from Scotland's  
Creative Learning Plan Partners and  
the National Creative Learning Network**

**#creativechange**

# Welcome

## Accessibility

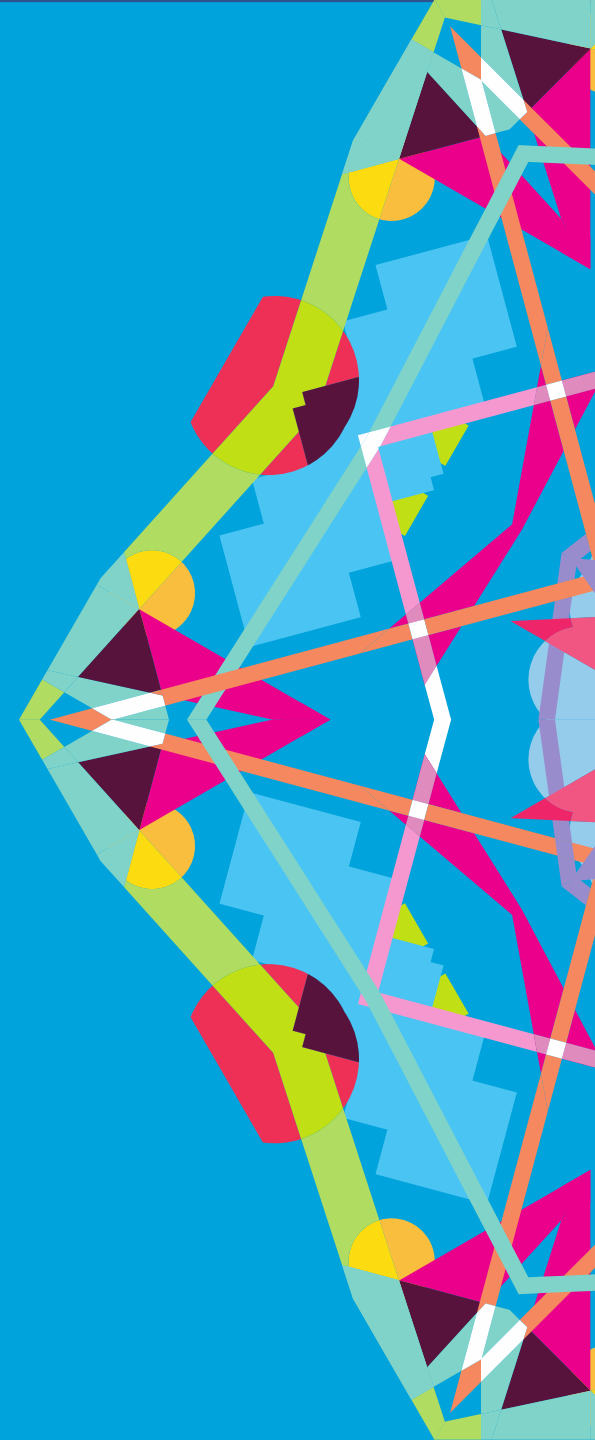
- Turn on live captions and choose language

## Reminder for attendees

- Turn off your camera during presentations
- Mute your microphone unless you are speaking
- Post comments, questions and thoughts in the chat pane

## Resources you may find helpful

- A note pad or device to record your thoughts
- Access to a mobile device could be useful





**Learner Led Consultation –**  
*a creative approach to engaging  
young people in curriculum reform.*

Weds 31<sup>st</sup> March, 10:00

**Linda Lees**  
**Wider Achievement Manager**  
[Linda.Lees@edinburgh.gov.uk](mailto:Linda.Lees@edinburgh.gov.uk)

**Charlotte Bennett**  
**Education Support Officer (SEIC)**  
[Charlotte.Bennett@edinburgh.gov.uk](mailto:Charlotte.Bennett@edinburgh.gov.uk)





# Site Context

150 hectare site; 200 ha of protected green space to West

Numerous masterplans and owners over last 20 years

Over 60 hectares of contaminated land; made ground and steep topography

2008: market failure, private sector investment halted

Piecemeal development; poor sense of place

Surrounding neighbourhoods within top 5% areas of deprivation (SIMD)

Former industrial; rich history and heritage but neglected

Strong public sector partnership and vision



# Context

## **1 in 4**

North Edinburgh residents live within the 10% most deprived datazones in Scotland.

## **High Crime**

Datazones within North Edinburgh have twice the crime rate per 1,000 population as the city as a whole

## **Lowest Income in Edinburgh**

The Muirhouse – 01 datazone had the lowest Mean Gross Household Income in the city based on analysis of Scottish Govt Datazones.

## **27% Relative Poverty**

Forth Ward has the highest relative rate of poverty in the city and the highest income inequality.

## **Negative Sentiment**

Residents in the Forth area report some of the lowest positive views of their neighbourhood as a place to live, or about having influence on local issues.

## **Poor Health Outcomes**

Locally, there is lower life expectancy and high rates of chronic and lifestyle related disease. The average female life expectancy is over 3 years lower than the city as a whole.

## **33%**

of school leavers at Craigroyston attained literacy and numeracy at Level 5 SCQF or better in 2018/19. Half the rate of the city as a whole.

## **Higher Deprivation**

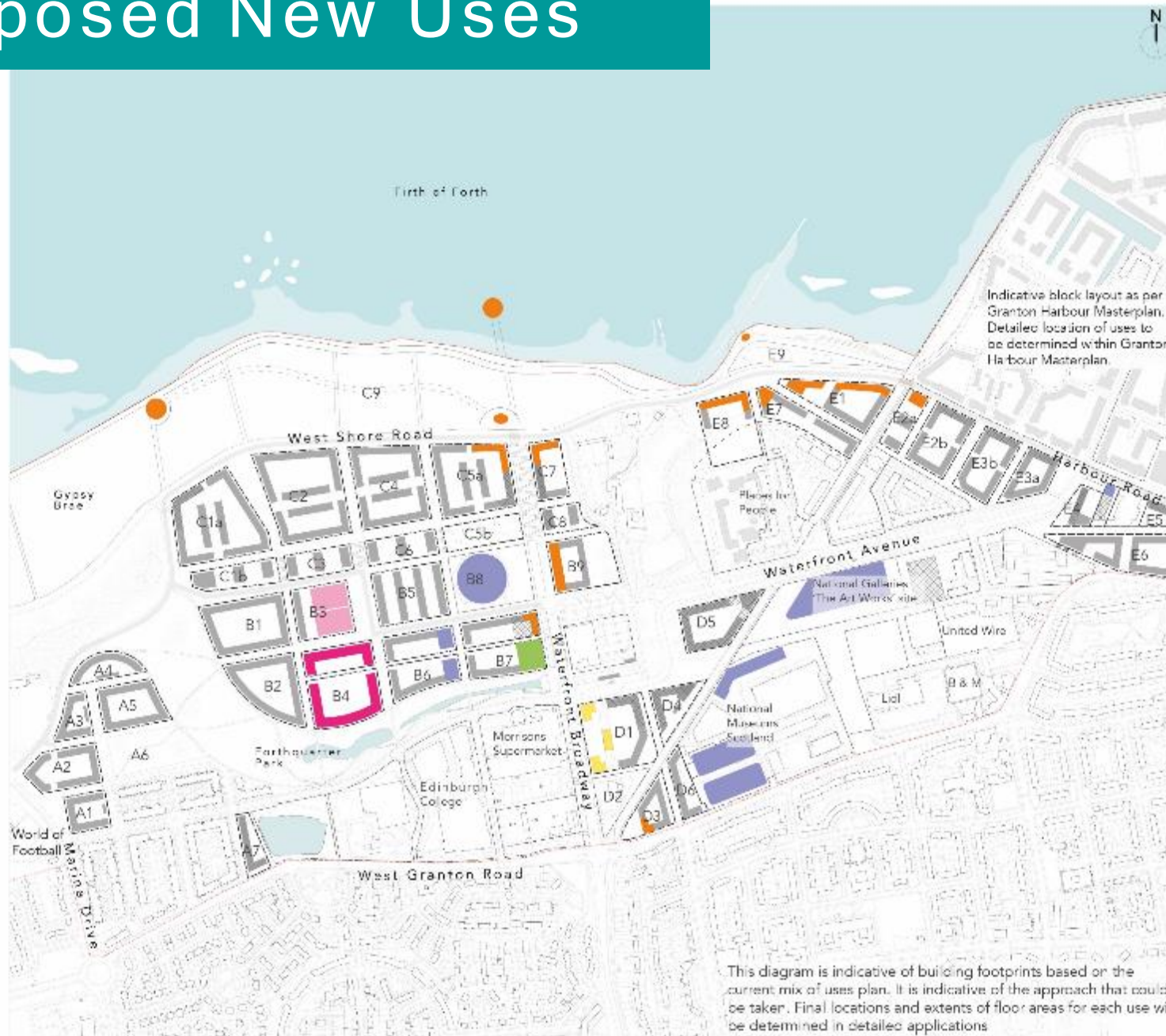
Granton Waterfront has consistently higher levels of employment deprivation compared to Edinburgh and North Edinburgh.

## **Housing Need**

Granton Social Housing & Council Homes receives higher than average bids per property compared to other areas in the city.



# Proposed New Uses



This diagram is indicative of building footprints based on the current mix of uses plan. It is indicative of the approach that could be taken. Final locations and extents of floor areas for each use will be determined in detailed applications

## Residential

The Development Framework should consist mainly of perimeter residential blocks with mixed use ground floor spaces at key locations.

**Class 1, 2, 3, 4** (1 = shops, 2 = financial, professional and other services, 3 = food and drink and class 4 = business)

Community spaces, shops and cafés should be provided at ground floor throughout the development Framework focused around key public spaces and routes. Housing should be provided to upper floors.

## Additional Class 1, 2, 3, 4

Areas should be designed to allow for potential inclusion of non-residential ground floor uses if demand is there.

## Healthcare

Provision has been made for a potential 1400 sqm health centre subject to NHS Lothian confirming their requirements. It is proposed that this be located to the prominent corner at Waterfront Broadway and Forthquarter Park as part of the key pedestrian link between a new transport hub and the pedestrian link to the Waterfront. There are opportunities to link this with elderly supported housing.

## Education and Learning

Proposals for the integration of a new urban primary school are being developed by CEC. There is an opportunity for complementary facilities, such as a nursery, library and community pitches located overlooking Forthquarter Park (B4). These are to be considered within the context of the urban character of the area. Site for proposed new Edinburgh College Construction Skills Centre to be around Waterfront Broadway and to provide links to other learning and education facilities.

## Arts and Culture (mixed use)

Proposals for a new National Galleries 'The Art Works' building, new use for gas holder, library and extensions/adaptations to the existing National Museums site.

## Enterprise and Innovation

Area to be considered for start-up and new business, learning and community spaces. These should incorporate publicly accessible facilities.

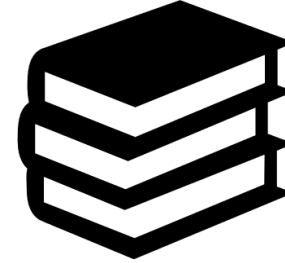
# Learning providers in the area



9 Primary Schools  
2 Special Schools



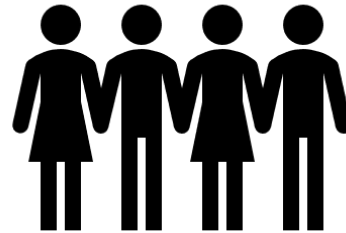
3 High Schools



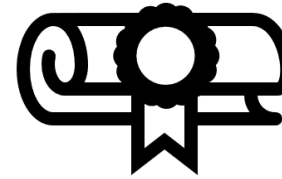
2 Libraries



3 Early Years Centres



5 Community Centres



1 College

# Discussion



**How important is it to know your school community well?**

**How can you local assets contribute to creative curriculum design?**

**How might creative approaches help overcome any local challenges or barriers to learning?**





3500+ NEW HOMES

3 STREAM PRIMARY SCHOOL

NATIONAL MUSEUMS OF SCOTLAND VISITOR CENTRE

THE ART WORKS

# DEVELOPMENT FRAMEWORK DELIVERABLES



NEW ACTIVE TRAVEL CONNECTIONS

WORLD CLASS PUBLIC REALM

NEW HEALTH CARE CENTRE

COASTAL PARK

EDINBURGH COLLEGE CONSTRUCTION SKILLS CENTRE





# GRANTON WATERFRONT PRINCIPALS





# LEARNING NEIGHBOURHOOD



*Opening the  
door to a  
network of  
learning  
opportunities*



# CULTURE & LEARNING ACTION PLAN



## GAS HOLDER

- 2021 – 2022**
- Carol Concert
  - Dynamic student-led project
  - Engaging businesses / communities
  - Launching Granton regeneration

## HOARDINGS PROJECT

- LAUNCH 2021**
- Engaging local community
  - Developing community capacity
  - Transforming visual impact of the street scape

## LEARNER LED CONSULTATION

- 2021 - 2022**
- Over 200 participants
  - Meaningful consultation
  - Building a collective understanding amongst providers on needs and ambitions

## RESTORING WALLED GARDEN

- 2022 - 2024**
- Preserving local heritage
  - Promoting health, wellbeing and community resilience
  - Market garden
  - A visitor destination

## NORTH EDIN COMMUNITY DAY

- 7 MAY 2022**
- Free, fun, family day out
  - Promoting learning and upskilling
  - Community cohesion
  - Activating our greenspaces

## WASP STUDIOS

- AUTUMN 2022**
- 40 jobs
  - Creative business development
  - Heritage programme
  - Creative workshops
  - Exhibitions
  - Student development

## MACMILLAN HUB

- SUMMER 2023**
- 40 jobs
  - New early years centre
  - Enterprise, workshops and learning space
  - Expanded café
  - Library and skills centre
  - Housing

## WEST SHORE STUDIOS

- AUTUMN 2023**
- 100 jobs
  - studios and workspace
  - Enterprise incubation units
  - Cultural event space
  - Public realm
  - Visitor destination



## Early Years

Oct– Nov 2021

Craigroyston EY Centre  
Granton EY Centre

## Primary School

Oct– Nov 2021

Wardie Primary School  
Pirniehall Primary School  
St David's R C Primary Sch

## Young People

Nov 21 – Jan 22

Craigroyston High School  
Granton Youth  
PYCP  
MYDG  
Spartans Academy

## Adults

Nov 21 – Feb 22

Stepping Stones  
North Edinburgh Arts  
Lifelong Learning  
Edinburgh College + More

ONLINE CONSULTATION

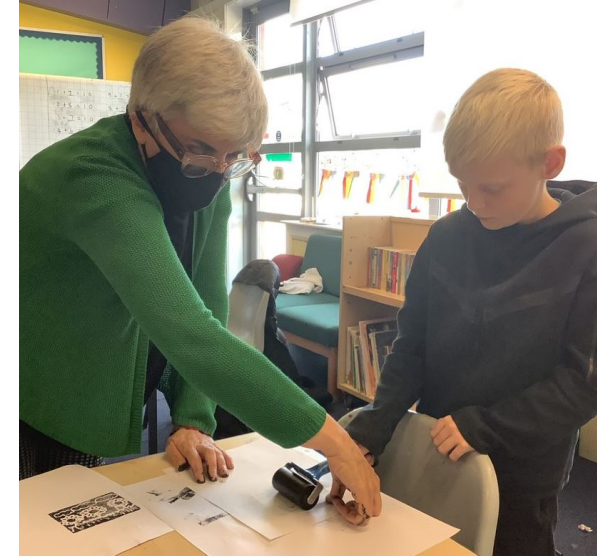




**Marion Geoffray**  
Wardie Primary  
Craigroyston Early Years Centre



**Heather Lucchesi**  
St David's R C Primary School  
Granton Early Years Centre



**Trish Byrce**  
Pirniehall Primary School





**Rosie Priest**

Stepping Stones  
Spartans  
North Edinburgh Arts



**Ed Robson**

Pilton Youth Children Project  
Granton Youth  
Muirhouse Youth Development Group  
Craigroyston Community High School



**Kate Nelson**

Pilton Community Health Project  
Lifelong Learning  
Edinburgh College  
Freshstart

## AIMS:

- Engage in meaningful consultation with young people about the curriculum in their school and services in their community that impact them.
- Engage children, young people and staff in a co-produced creative process; developing skills for work and life.
- Create a legacy artwork in which children, young people and their families can see their ideas reflected in a creative/visual representation of their ideas and the consultation findings.



## IN ORDER TO:

- Impact school improvement planning and the learning strategy across north Edinburgh; and
- Provide baseline data and tools for school leaders and young people to evaluate their curriculum as it goes through the redesign and reform process.



- Debrief meetings with Schools & EYC
- Debrief meetings with artists
- Data analysis and draft report

November 2021



- Final report published
- Key findings shared with Schools & EYC

December 2021



- 2-5 mins video summary
- Presentations to school leaders / stakeholders and local learning providers
- Toolkit made available
- Next steps meetings arranged to support schools and settings with implementation plans

January – March 2022



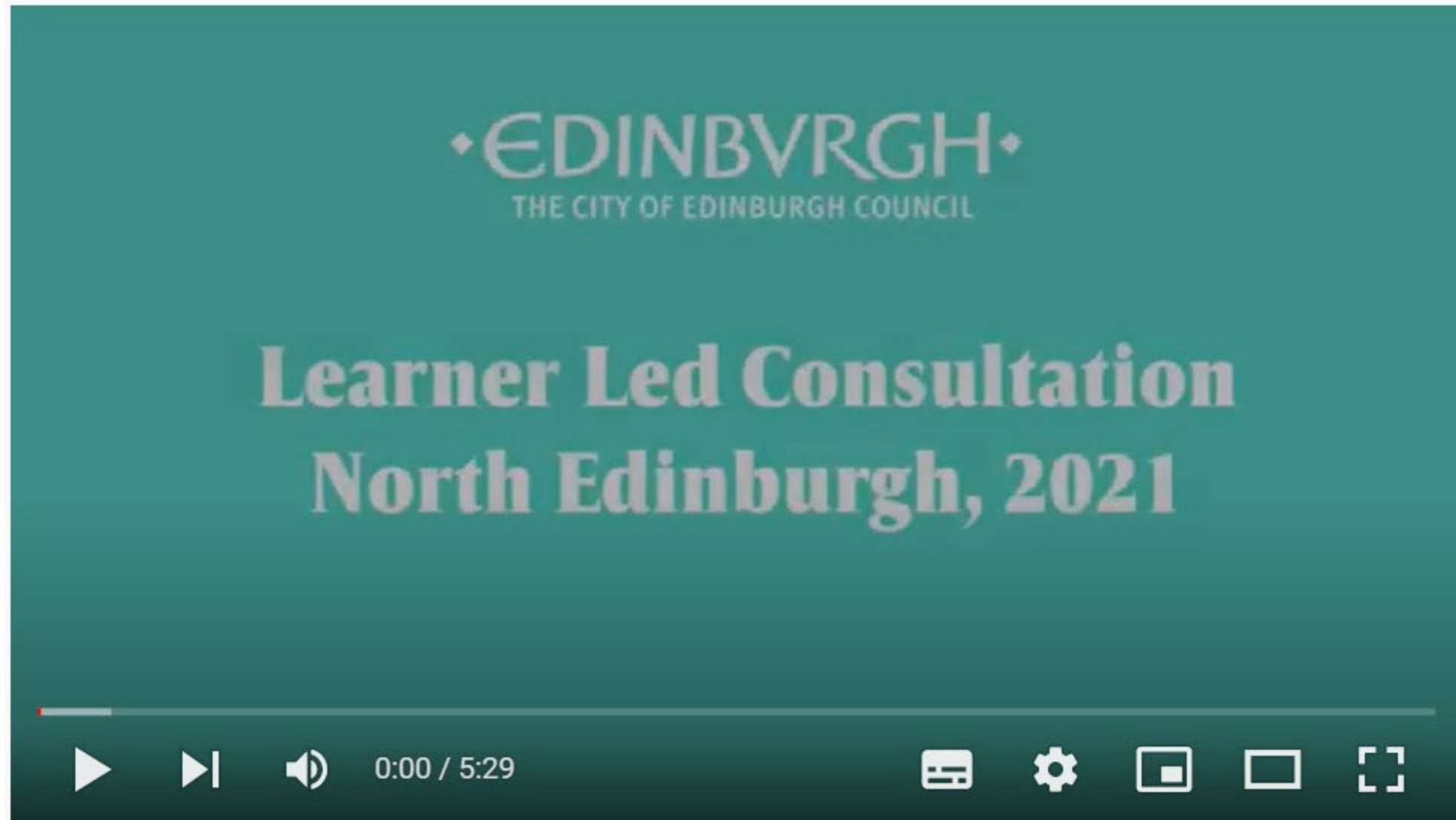


# Discussion

How can a creative approach inform curriculum reform?

What impacts can a creative curriculum have on a whole-school community?





<https://youtu.be/ny0HjCM4Qto>



# Thank you for attending this session of the National Creative Learning Partnership Event

[creativityportal.org.uk](http://creativityportal.org.uk)  
[#creativechange](https://twitter.com/creativechange)