



RECOVERY UPDATE



Since children and young people returned to school in August 2020, many things in education look and feel different. Here is an update from Forthview Primary headteacher, **SHARON MITCHELL**, and family support teacher, **TRACEY BERRY**, about how they have moved on and adapted their practice for the current context.

FORTHVIEW Primary School

HIGHLY-EFFECTIVE PRACTICE IN FAMILY LEARNING AND PARENTAL ENGAGEMENT.

FROM THE START OF LOCKDOWN



ENGAGEMENT with FAMILIES
in order to support the wellbeing of children and their parents and carers. Staff use regular phone calls, one to one meetings, daily school gate discussions and social media.



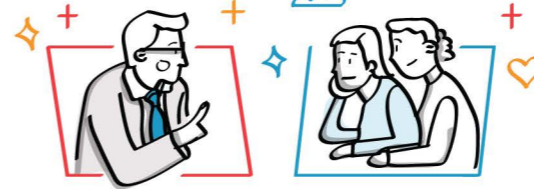
STAFF DELIVERED FOOD PARCELS
* coordinated by family support teacher and responsive to need
* to around 70 families
* with 35-50 going out every week from the start of lockdown until August.
* 130 hot weekend meals each Friday (since schools have reopened as part of the Edinburgh Covid-19 response)

RESOURCE PACKS

Between the start of lockdown and the end of June staff hand-delivered weekly learning packs and provided daily facebook links to learning sites.



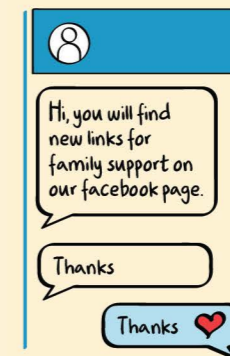
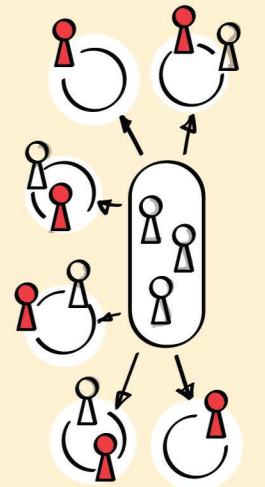
LEARNING JOURNALS



Staff now plan to expand their use of learning journals to all year groups. This should support parents to be more informed about and included in their child's learning.

Since August

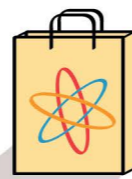
The headteacher has moved **STAFFING** around:
* max 2 daily bubbles for staff
* additional staffing allocated to each stage
* extra time from SLT to support attainment
* play therapists - 1:1 emotional check ins with children



Staff are able to still have good conversations with parents at the school gates. The family support teacher uses social media and texts to keep connections going. From this they can provide **ADDITIONAL SUPPORT** to individual families around learning, mental health, financial issues etc.

More information:

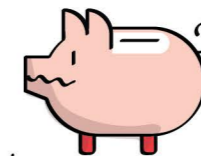
LEARNING IN LOCKDOWN;
Paper packs and online learning sessions. Each Wednesday, alongside the food and learning packs, toiletries and IT equipment were included.



REGULAR CHECK INS with each **FAMILY** – Mar-June. This included teachers sending out daily emails. Phone calls were made by staff to families more at risk.



EMERGENCY FINANCIAL SUPPORT (a few cases)
The family support teacher also gave out some crisis payments to support families where needed.



TRAUMA RECOVERY PROGRAMME GROUP (sessions online)

Ongoing contact including some socially distanced face to face contact with individual members of the group.

