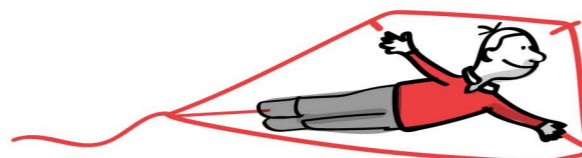


ABERDOUR
Primary School



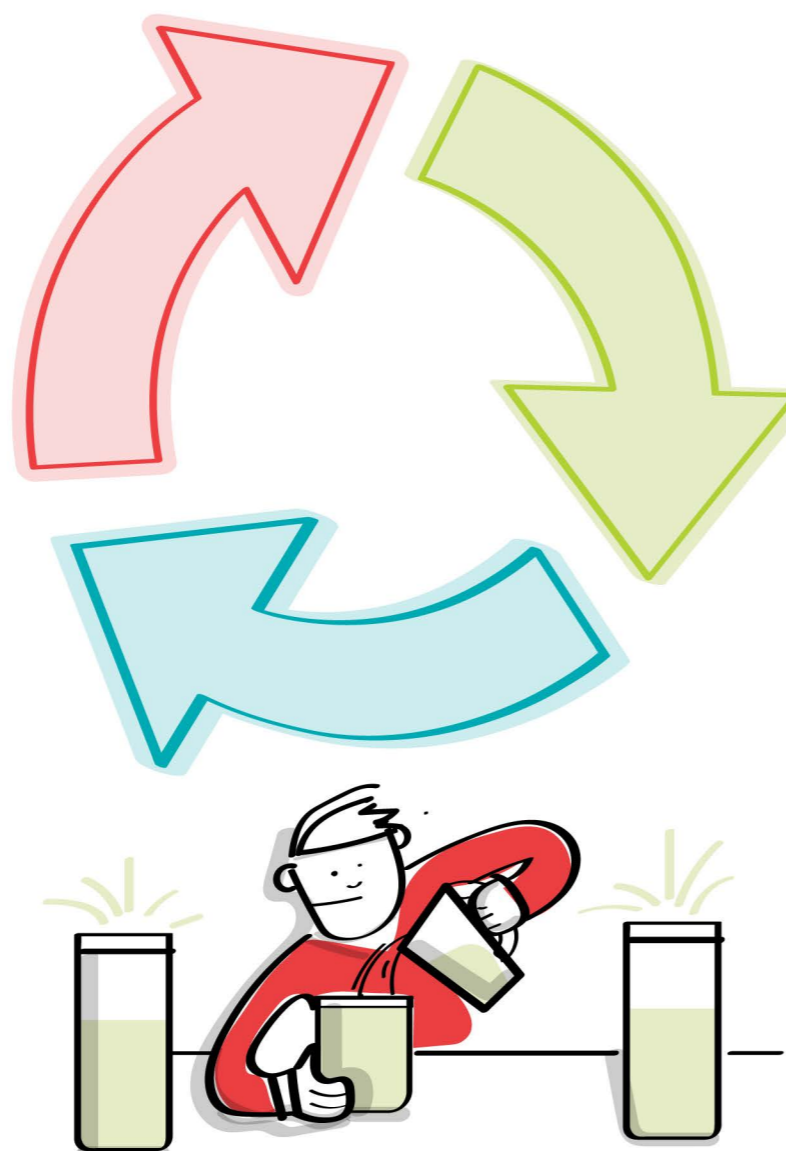
October 2020

The approach to **PLAY PEDAGOGY** in P1 SUPPORTS CHILDREN'S CURIOSITY AND ENQUIRY IN LEARNING.



BLOG

ABERDOUR PRIMARY SCHOOL
Bookshelf of Reading and Research



This implementation evolved in stages. The development of the approach was informed by current research and best practice, alongside professional learning by the class teacher. Fife Council adopted this approach in early years settings and Primary 1 classrooms and provided professional learning opportunities, in which Aberdour participated.

Children are intrinsically motivated by the play-based environment and fully immersed and engaged at all times. The children have become leaders of their own learning. They are independent across all curricular areas and are more articulate about their learning.

The class teacher has developed strategies to ensure balance in her day. There are a range of learning experiences including those that are child initiated, adult initiated and adult directed.

The teacher has become highly skilled in the use of observation of play, responsive planning from this and the subsequent tracking and monitoring of learning for all children. This ensures play is always purposeful, meaningful and extended where appropriate.

There is an ethos of learning without a ceiling.

Louise Wood,
acting headteacher

