

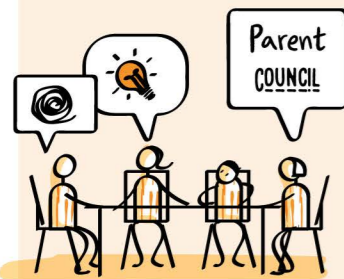
Shift in emphasis away from the relationship between parents and schools
Focus on relationship between parents and their child's learning



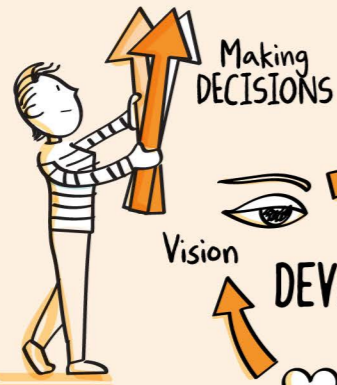
PARENTS INVOLVED in the LIFE and WORK of the SCHOOL

PARENTAL involvement

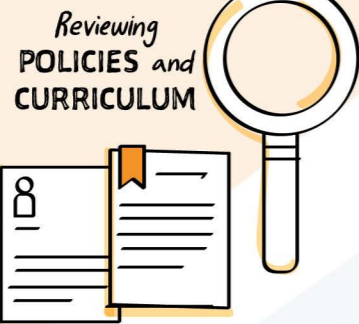
Parents and teachers working as partners



Parent COUNCIL



Working GROUPS



Reviewing POLICIES and CURRICULUM



PLANNING IMPROVEMENT



LEARNING at home

Everyday activities



THE LEARNING which HAPPENS in the HOME, OUTDOORS and/or in the COMMUNITY



Intergenerational LEARNING



Progression



Inclusive

SHARED ACTIVITIES are designed to enable parents to learn how to support their child's learning



ADULT LEARNING



NEEDS LED



OUTCOME-FOCUSED



ACHIEVEMENT



MEANINGFUL and planned



FAMILY Learning

FAMILIES LEARNING TOGETHER



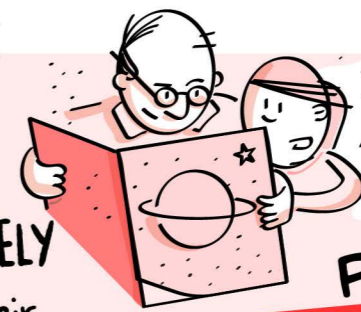
ASPIRATIONS



Builds on what families already do to help children's learning

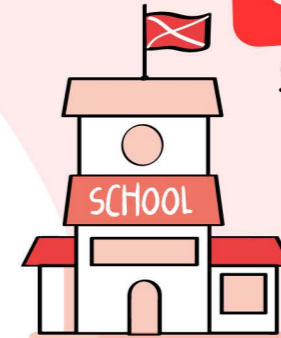


PARENTS ACTIVELY INVOLVED in their CHILD'S LEARNING



PARENTAL engagement

Supportive home learning environment



SCHOOL



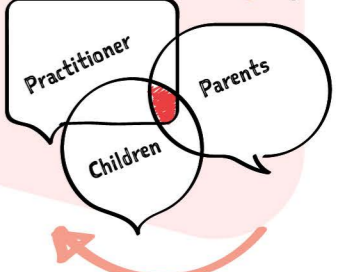
OUTDOORS



at HOME



Supported by discussion



Including organised or active learning opportunities

