

Ethos of NURTURE and ACHIEVEMENT

GRANGE PRIMARY SCHOOL

School leaders and staff have a relentless drive to ensure **NO CHILD MISSES OUT**

Support and challenge to make the best possible



Sustained high-levels of ATTAINMENT



'ACHIEVEMENT AND EQUITY PROCESS MAP'



effective action is taken when children are not yet making expected progress



Use of data to analyse the impact of staff and steps to improve outcomes

LEARNING AND TEACHING

CONSISTENTLY HIGH-QUALITY

ACROSS THE NURSERY AND SCHOOL



PLANNING CYCLE

IN LITERACY AND NUMERACY
RESPONSIVE TO ASSESSMENT RESULTS



ACTIVE #ENGAGEYOURSELF
RESPECTFUL #ACCEPTANCE

SUCCESSFUL #PROGRESS

TRYING HARD #POSITIVITY

SAFE #RIGHTCHOICES



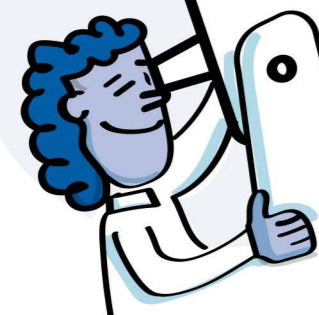
CLEAR, SHARED STANDARDS AND EXPECTATIONS

Commitment to high-quality LEARNING and TEACHING



VISION

Reach for THE STARS
#BELIEVE



EXCELLENT



FOCUS ON A 'GREAT GRANGE MINDSET'

A SUPPORTIVE CULTURE based on positive, respectful relationships and ambitious self-belief

HEADTEACHER'S INSPIRATIONAL LEADERSHIP

children know the qualities required to be successful learners



Children and adults

FEEL VALUED