

## PRIMARY SCHOOL

A wide range  
**OF MOTIVATING AND CREATIVE  
LEARNING OPPORTUNITIES**  
engage children using  
the local environment.

## HEALTH and WELLBEING **3**

Outdoor spaces  
**USED WELL TO  
PROMOTE POSITIVE  
relationships**



enriching children's experiences through  
**OUTDOOR LEARNING**

## **MOTIVATING and CREATIVE opportunities**

**1**

Skills for learning, life and work

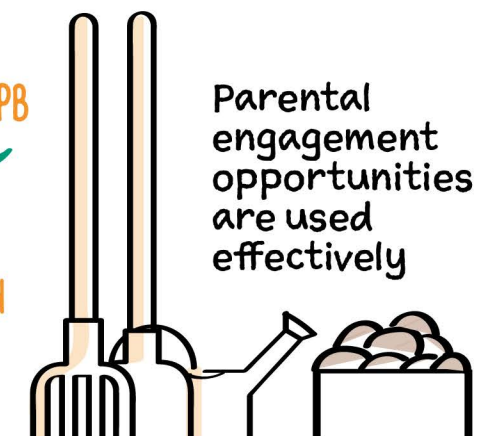
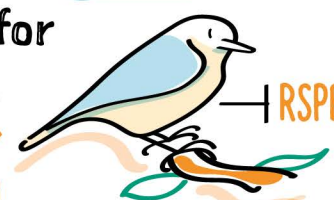


RESILIENCE, PROBLEM SOLVING  
AND COMMUNICATION

**2**

## **OUTDOOR LEARNING**

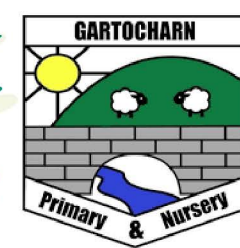
Partners and local  
businesses support  
learning:



HIGH-QUALITY PROFESSIONAL  
learning for all staff



NATIONAL PARK



**West  
Dunbartonshire  
COUNCIL**

Wide range of  
High-quality  
ACTIVITIES  
FOR CHILDREN

Regular and  
well planned

REGENERATION  
of outdoor  
learning  
environment