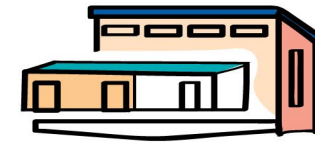
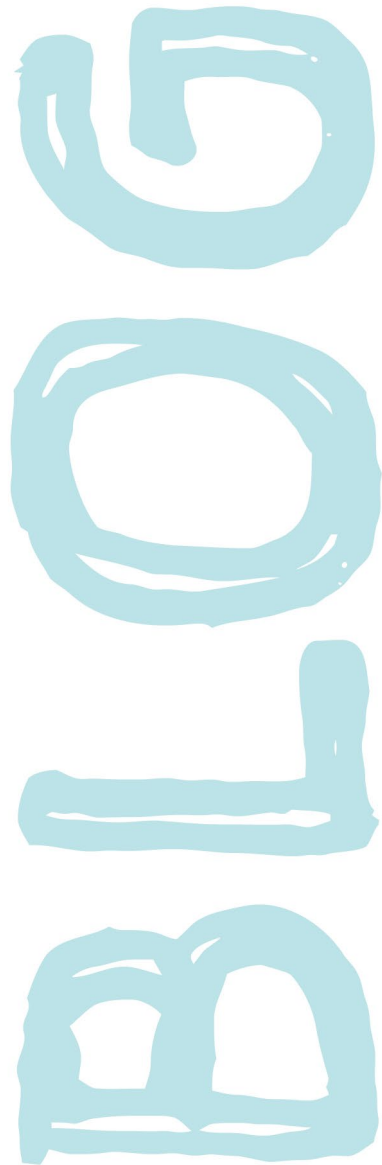
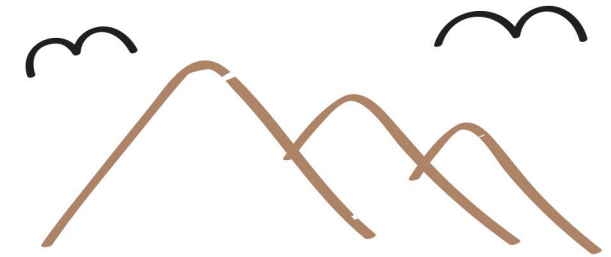


LOCHALINE PRIMARY SCHOOL



March 2019

At Lochaline Primary School, our child centred approach to all decision making sees us nurturing children's emotional intelligence and helping them to actively seek and identify their strengths and weaknesses so they can progress in their learning and development.



Being a small rural school in an isolated area means we have to effectively utilise the skills of all staff, parents, local environment and the wider community.

We've developed a strong relationship with the local community and staff are encouraged to share their talents and strengths to enhance the children's experiences. Children have the chance to share their learning with the whole school and the wider community.

Keith Adams, Headteacher



Our staff meticulously plan to ensure that cross curriculum learning is embedded into all learning experiences

Staff understand that children learn better if they can see a purpose and are given the opportunity to learn collaboratively. Our learning and teaching is relevant and meaningful, encouraging lifelong learning, curiosity and success.



We have actively encouraged drama as it brings writing to life

Our analytical use of data and assessment information helps us in the tracking of children's achievements and gives us an insight into personal development. Using the data we have been able to identify additional needs and apply suitable interventions.