

# RECOVERY UPDATE

As children and young people returned to school in August 2020, many things in education look and feel different. Here is an update from Aberdour Primary acting headteacher, **LOUISE WOOD**, about how they have moved on and adapted their practice for the current context.



## ABERDOUR Primary School

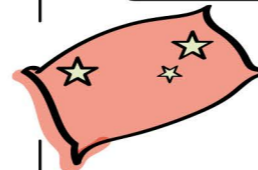
The approach to **PLAY PEDAGOGY** in P1 SUPPORTS CHILDREN'S CURIOSITY AND ENQUIRY IN LEARNING.



Despite the current restrictions the **PLAY-BASED APPROACH CONTINUES**. The continuity of approach from nursery to Primary 1 is **FUNDAMENTAL FOR LEARNING AND TO SUPPORT THE HEALTH AND WELLBEING** of the children post-lockdown.



With minor modifications this approach is being fully implemented

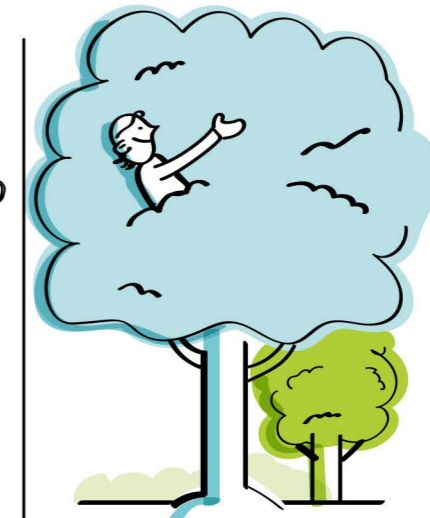


MANY OF THE RESOURCES HAVE HAD TO BE REMOVED.

**NON-SHAREABLE RESOURCES** like play dough, soft furnishings, junk modelling, dressing up as well as the bedroom and living area.



Natural loose parts have been substituted with **PLASTIC** or **EASILY CLEANED ITEMS**.



**MORE CAREFUL CONSIDERATION HAS BEEN GIVEN TO THE PROVOCATIONS AND EXTENSIONS PROVIDED**

With less resources to choose from, careful monitoring and responsive planning is key to ensuring play is of a high-quality

**THE PRIMARY 1 TEACHER** is supporting this approach in the **PRIMARY 2 CLASS**.

A priority going forward will be to **DEVELOP PLAY ACROSS THE SCHOOL WHERE CHILDREN ARE BEING ENCOURAGED TO LEAD THEIR LEARNING.**

