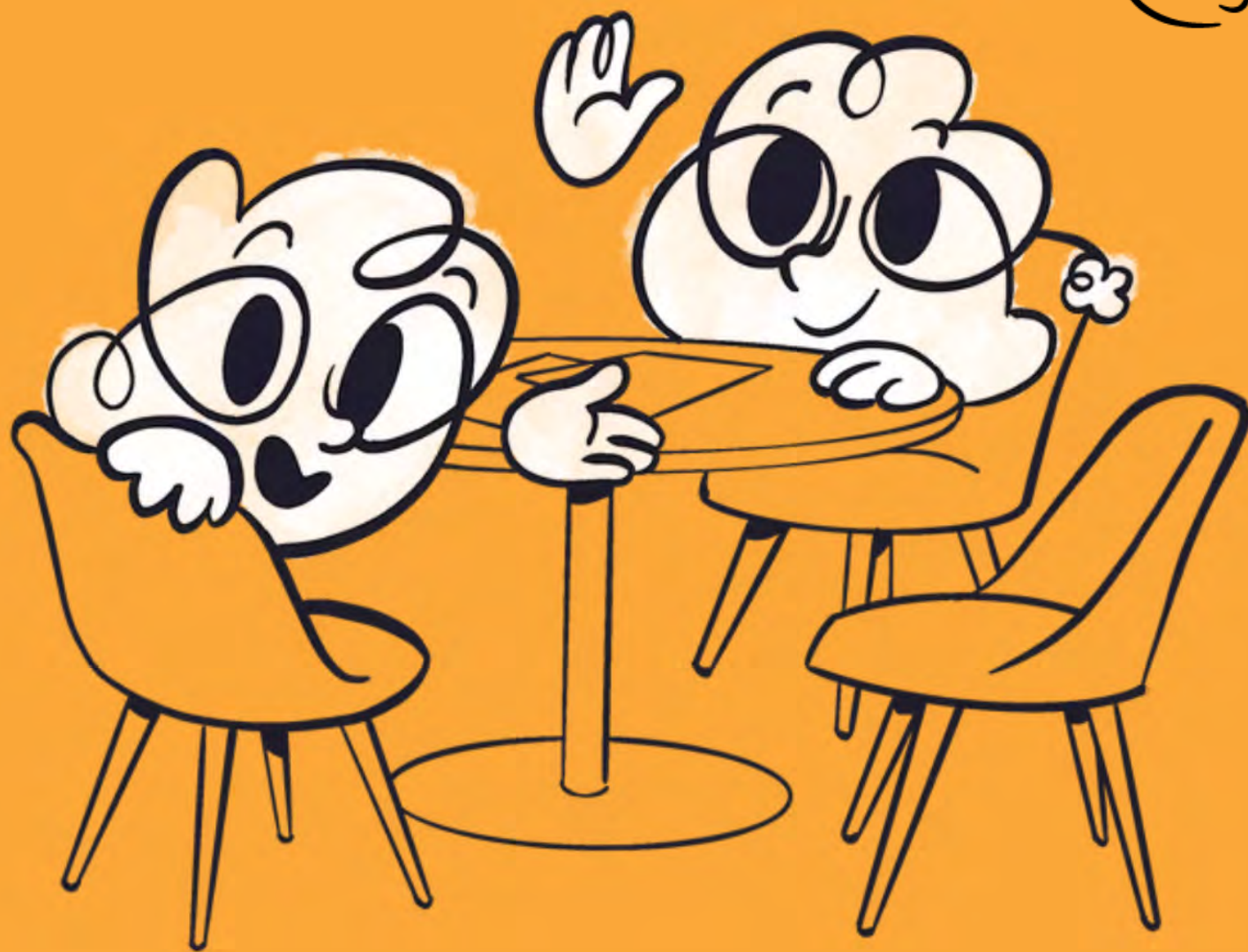




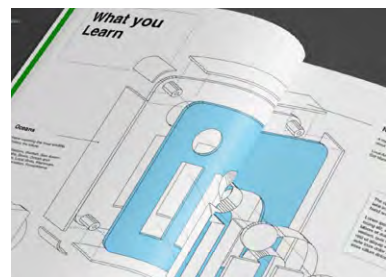
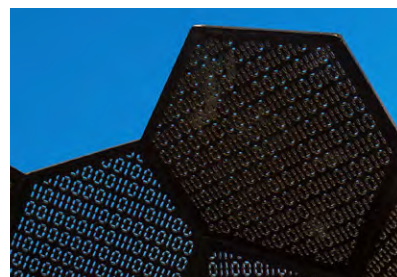
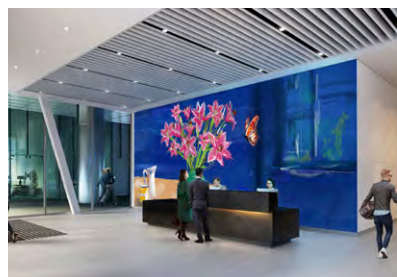
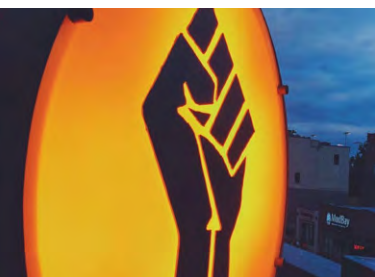
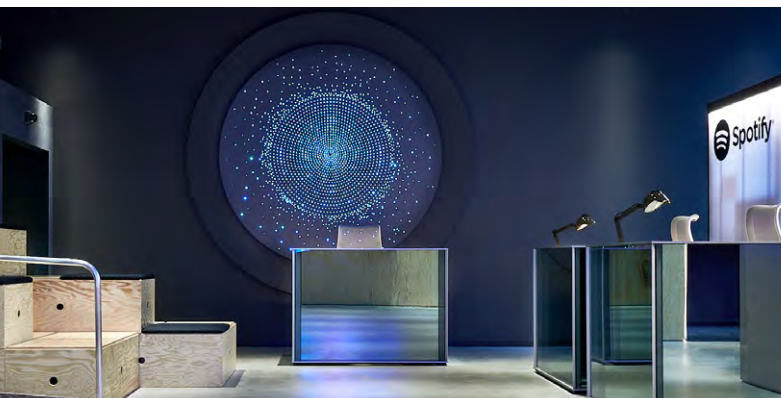
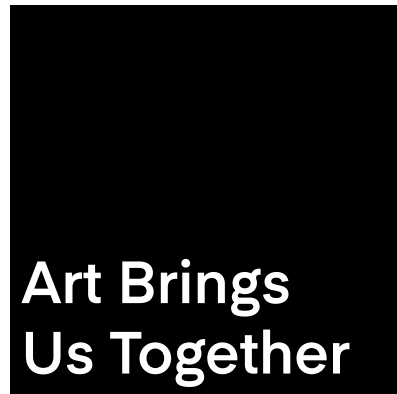
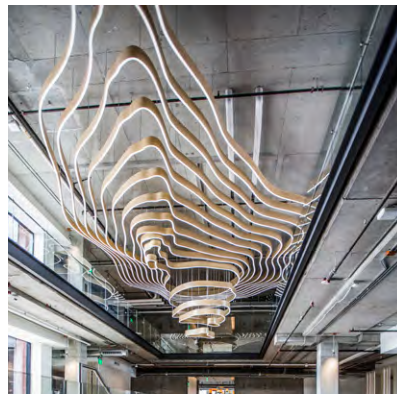
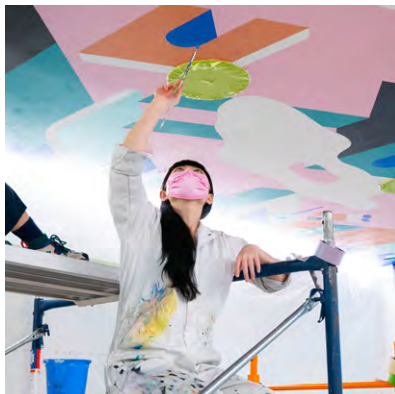
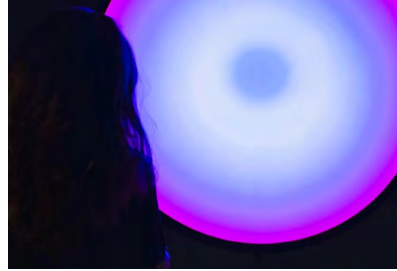
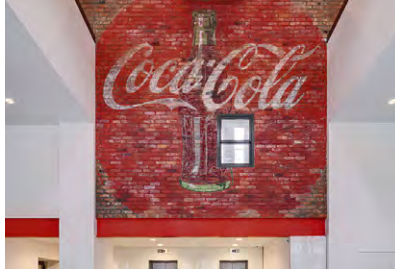
Acrylicize X





Acrylicize

**We harness the power
of art and creativity
to help people fall in
love with spaces.**



What we do
How we do it

**Creating a space through
storytelling. Activating the
space through connection.
And this is how we do it...**



Create

[Click for video](#)

Still Life

[Click for video](#)



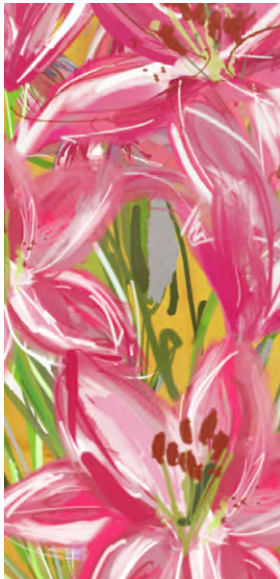
Still Life

Cherishing the world around us

Reflecting the beauty and simplicity of nature, Still Life is a vibrantly illustrated living artwork depicting a bunch of lilies sat by a window. Designed to be ever-changing in line with the weather outside, it invites us to appreciate the simple magic of nature which is constantly around us but so often overlooked. It reminds us to cherish the world around us as we navigate an increasingly challenging world and the rebuilding of the natural environment.



INITIAL INSPIRATION
FLOWER IN BLOOM

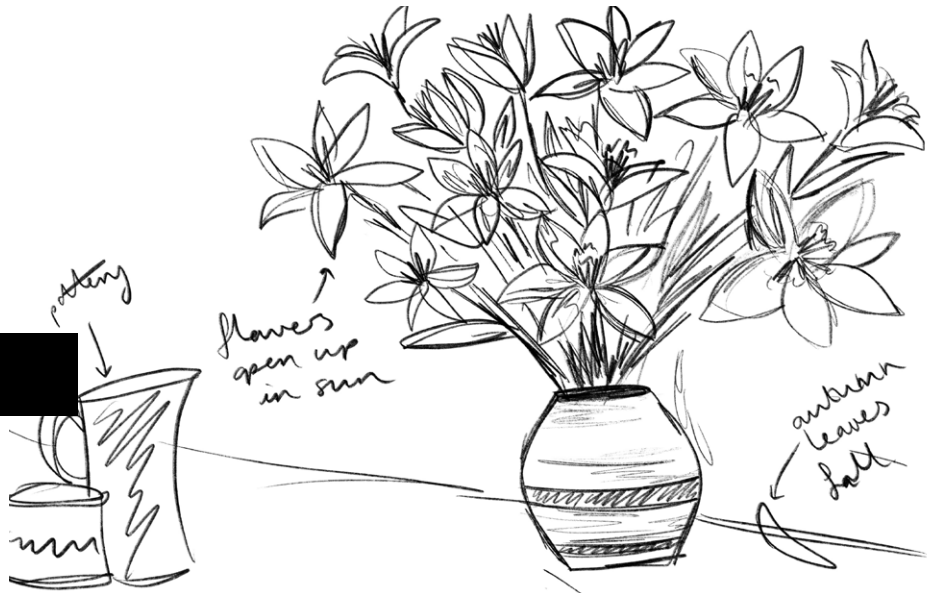


FIRST COLOUR PASS

CHANGES TO THE WEATHER



SKETCH/ IDEA





[Click for video](#)





Winter Garden

[Click for video](#)

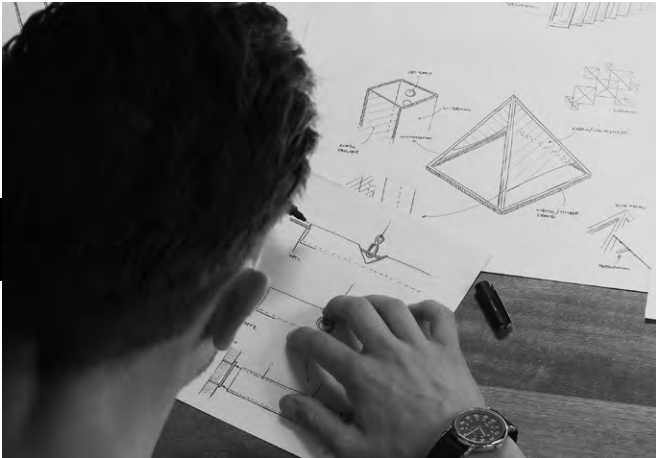
Winter Garden

Creating a serene and peaceful environment where viewers can reflect and breathe

Commissioned by the Christie NHS Foundation Trust, the piece is inspired by the tranquillity of a forest. Motion lights are programmed to conjure illusions of flickering sunlight through trees, mimicking the experience of sitting beneath the canopy. The installation offers a moment of escapism for those underneath it.



INSPIRATION

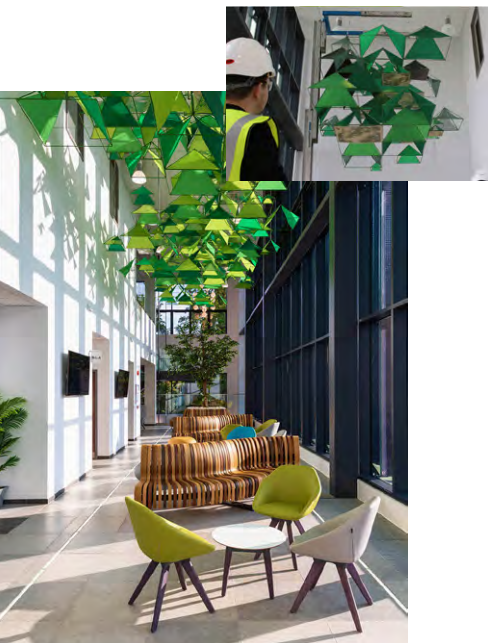


PROCESS SKETCHES

INSTALLATION



Full Circle Approach



05
Deliver
Production and installation



Final preparation
for production



01
Discover

Establish
brief and
design intent

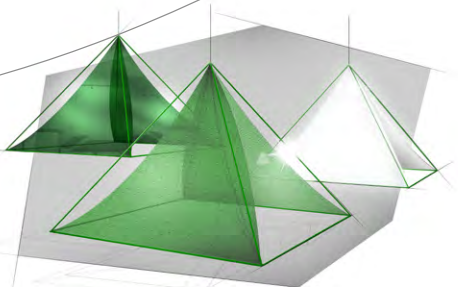


02
Design

Initial idea generation



03
Develop



Chosen ideas into final designs

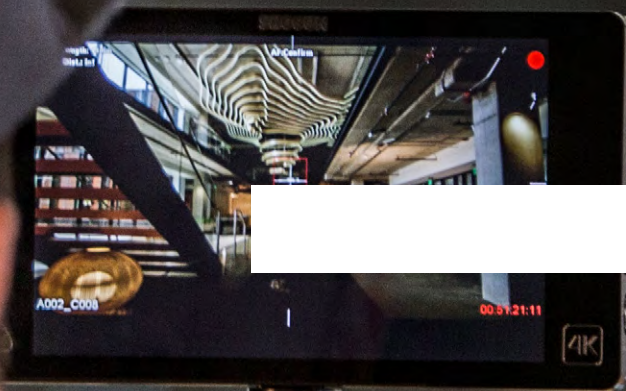
04
Detail

How we did it



PROTON BEAM THERAPY CENTRE

Activate



BloomHouse

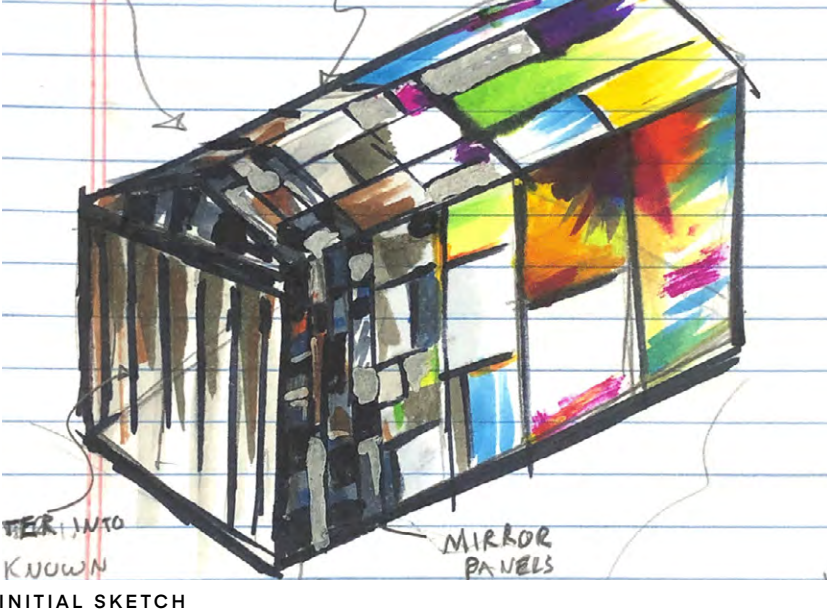
[Click for video](#)



BloomHouse

Giving the community a voice and collective expression.

BloomHouse gave the community a voice to reflect on our collective experiences during the past year. Throughout the weekend the installation transformed from an empty illustrated shell to an expressive, immersive experience that brought people together, reflecting on what has hapened throughout the covid 19 pandemic.



COMMUNITY ENGAGEMENT



DEVELOPED ILLUSTRATIONS FROM COMMUNITY QUESTIONNAIRE




USING TECHNOLOGY TO ENGAGE THE PUBLIC





Activation through engagement

Signwriting

A photograph showing two women from behind, focused on a large sheet of paper mounted on a wooden board. The paper has horizontal red lines and faint, large letters. The woman on the right is using a yellow pencil and a blue ruler to draw. Several reference cards are pinned to the board, showing different fonts like 'GOTHIC' and 'BOLD'. The scene is brightly lit, suggesting a window in the background.

ABCDEFGHIJ
KLMNOP
QRSTUVWXYZ
BOLD

GOTHIC

ABCDEF
GHIJKL
MNOPQ
RSTUV
WX&YZ

ABCDEFGHIJ
KLMNOP
QRSTUVWXYZ

Signwriting

Engaging the community through participatory workshops

Acrylicize hosted Mike Myers, a traditional signwriter, in an effort to get the whole team practising a new discipline that involved connecting with material and physical output rather than the normal screen based works. It created a fun atmosphere of learning and playfulness and allowed the staff to connect with each other and a new technique.



SPACE TAKEOVER



LEARNING SOMETHING NEW

CONNECTION & COMMUNITY



CARE FREE CREATIVITY



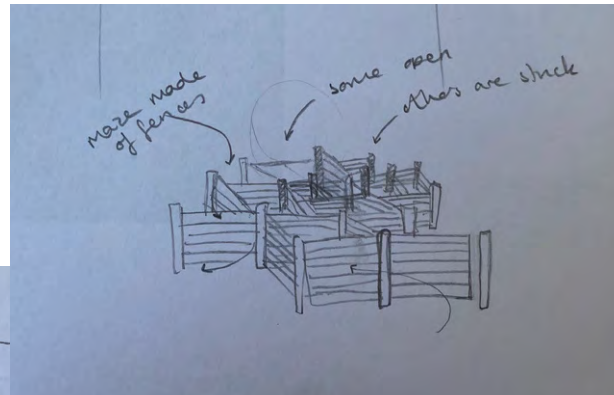
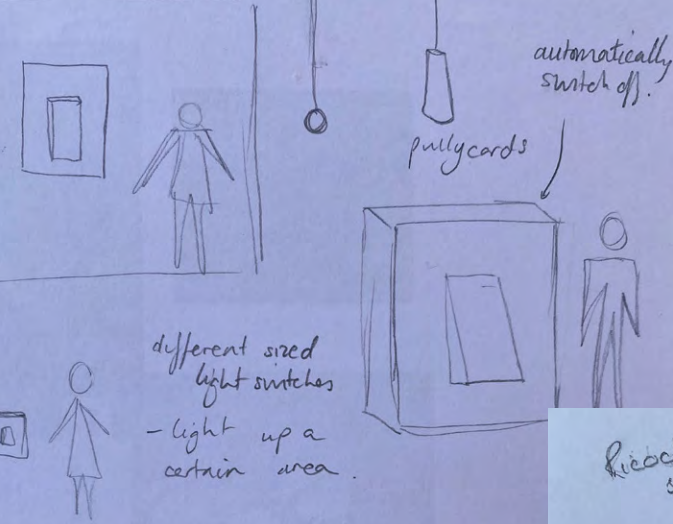


Activation through workshops

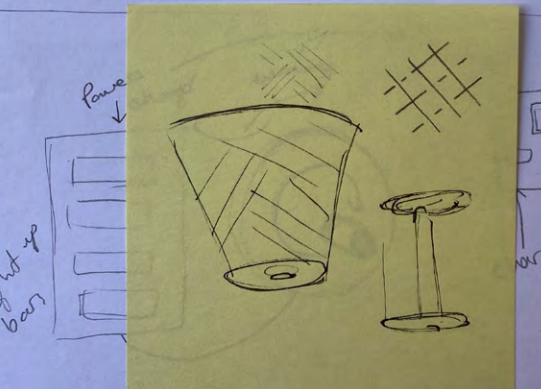
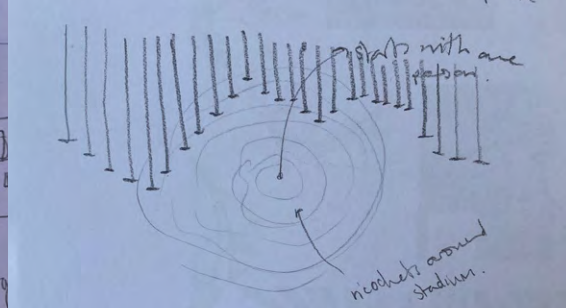
**Now its your turn..
where to start..
the white blank paper
can be very scary!**

THE Scrap Ideas Challenge

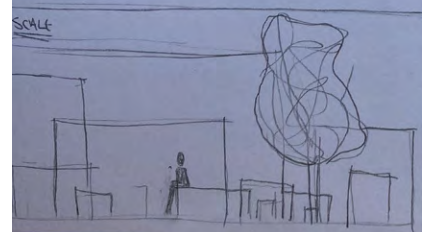
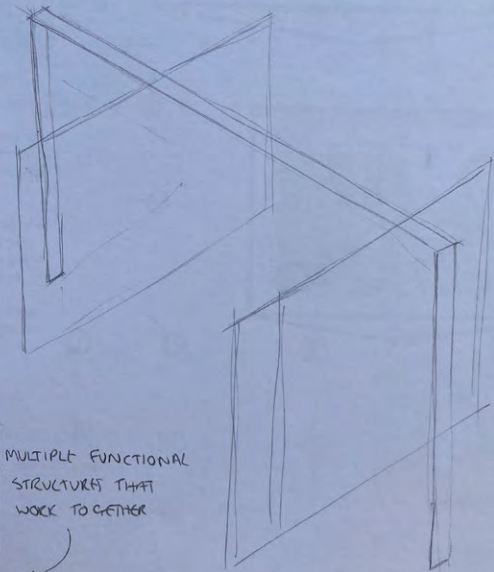
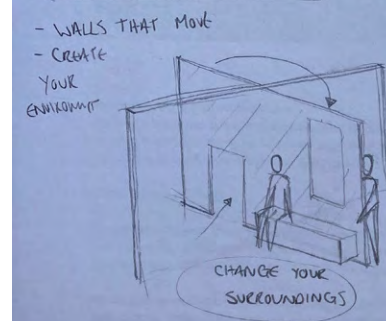




Recochet of sand.



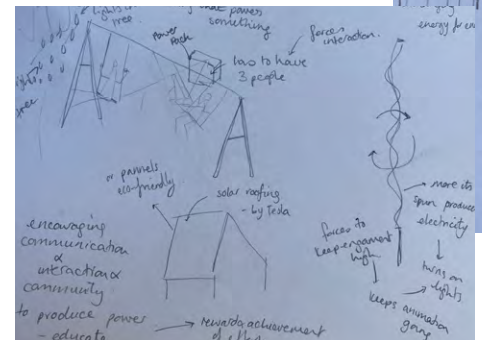
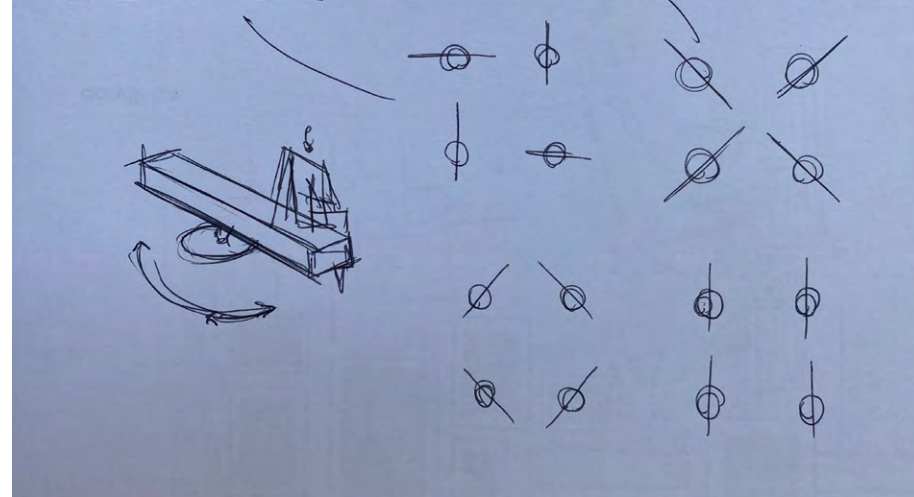
FUNCTIONAL PLAYGROUND



MULTIPLE FUNCTIONAL STRUCTURES THAT WORK TOGETHER

- CAMILLE WALALA MAKE

SOCIAL SEATING



**Health is a state of
the body. Wellness is
a state of being.**

The brief...

Reinvent an old disused school assembly hall into a new wellbeing space. Consider how the artwork will create an open, approachable and inclusive atmosphere and how throughout time this space can be activated differently.

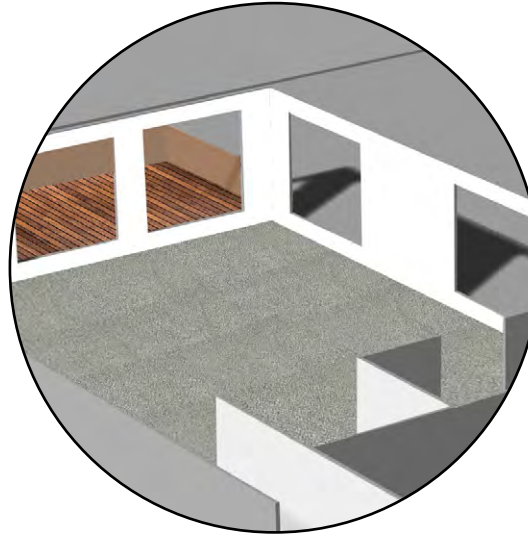
Approach

The 2 Routes

There are 2 ways you can approach this project. Spend some time looking at both spaces, understanding how they differ and what opportunities could arise from each approach.

Neither is better than the other, they might just get you to think about the outcomes slightly differently.

Our School



Our School is a theoretical school. It is based not far from your school now. You are provided with the plans of the space, as well as some pictures of the unpopulated area. These have all the dimensions already given, but you will still need to draw up elevations.

Your School



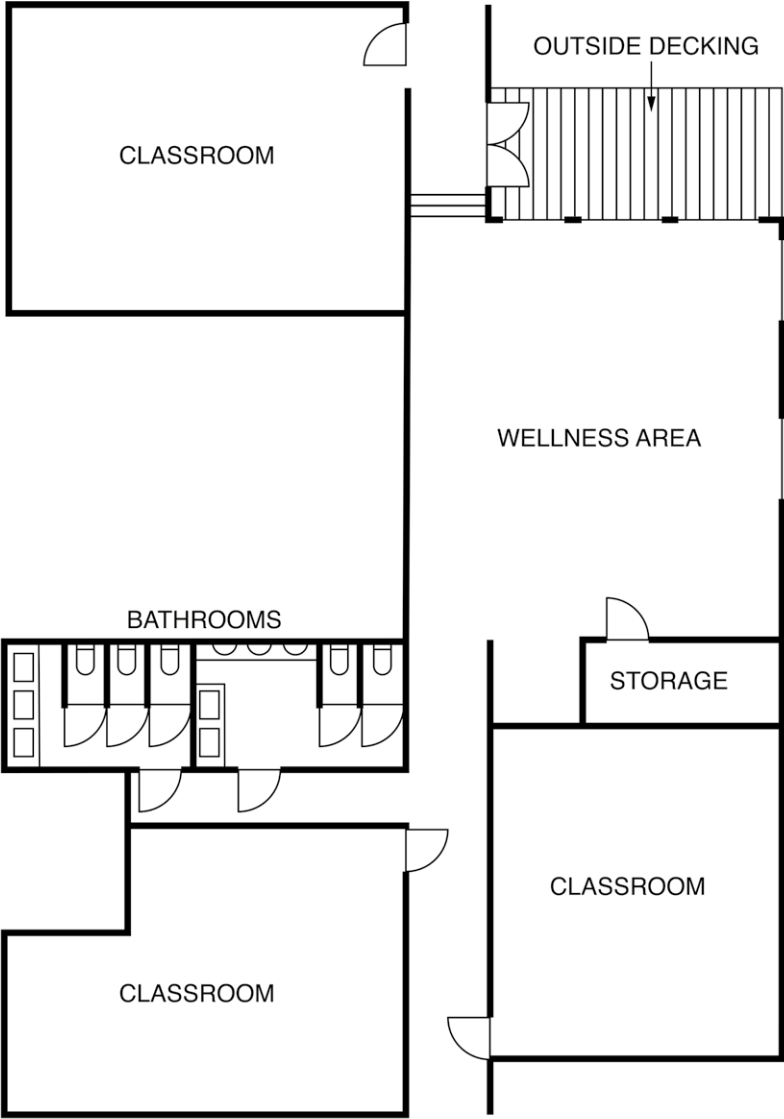
Your school, quite literally means the school you are in right now. You have the opportunity to find a space within your school that you think could hypothetically be a good wellness area.

This route will require creating your own plans of the space, measuring walls and potentially having conversations with the headmaster/teachers about real life outcomes at the end of the module.

Our School

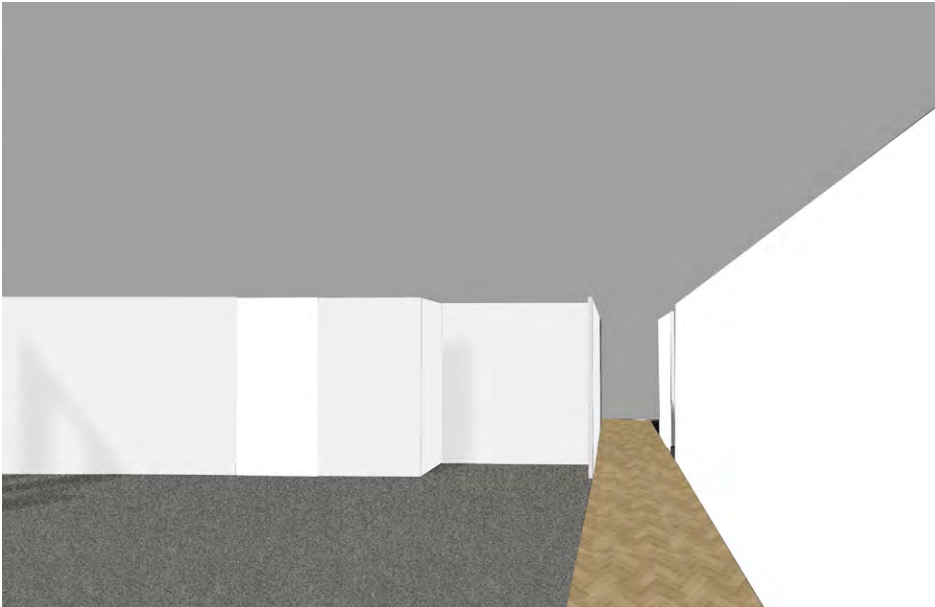
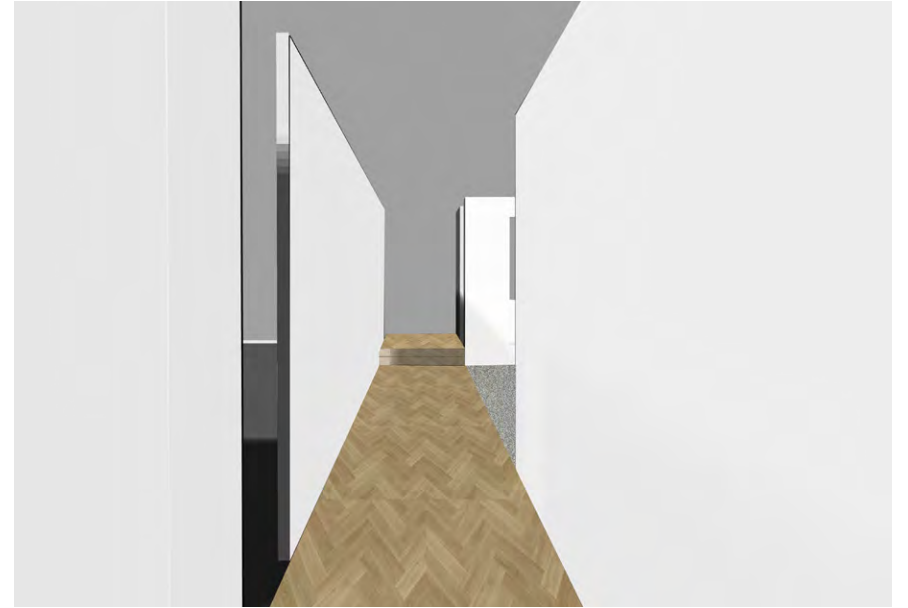
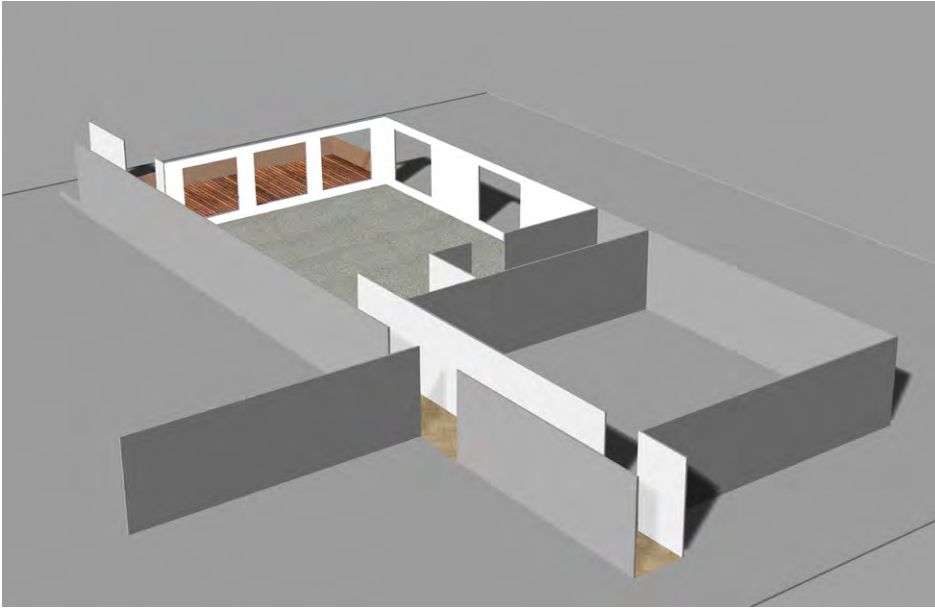
Plans

This is the plan view of the area you have been asked to look at. The space entitled 'Wellness Area' is the main space, with opportunities lying beyond this in the lower and upper corridors and the outside decking area.



Our School

Visuals



**Thank you very
much!**

