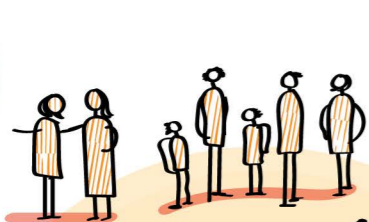


# ST. TERESA'S PRIMARY SCHOOL

## OUTSTANDING ethos of inclusion

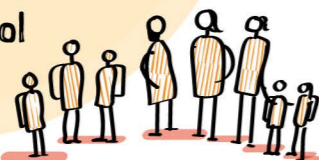
1

**STRONG and CARING leadership**  
OF HEADTEACHER



are known extremely well by STAFF

St Teresa's Primary School has a very **STRONG ETHOS OF INCLUSION**, which is **IMPROVING THE LEARNING EXPERIENCES FOR ALL CHILDREN** in the school



**INCLUSIVE APPROACH** children who require additional support are supported in classes, wherever possible

**SENIOR LEADERS ARE VISIBLE AND AVAILABLE**



# TRUST

## Ongoing needs met extremely well

2



**TALKING THERAPY**



**BEREAVEMENT support**

All staff aware of updates & information about children's **WELLBEING & LEARNING**

**CREATIVE INTERVENTIONS** help children develop skills and resilience



TARGETED SUPPORT for learners is **EXCELLENT**

**(GIRFME)** "Getting It Right For Me" approach used effectively



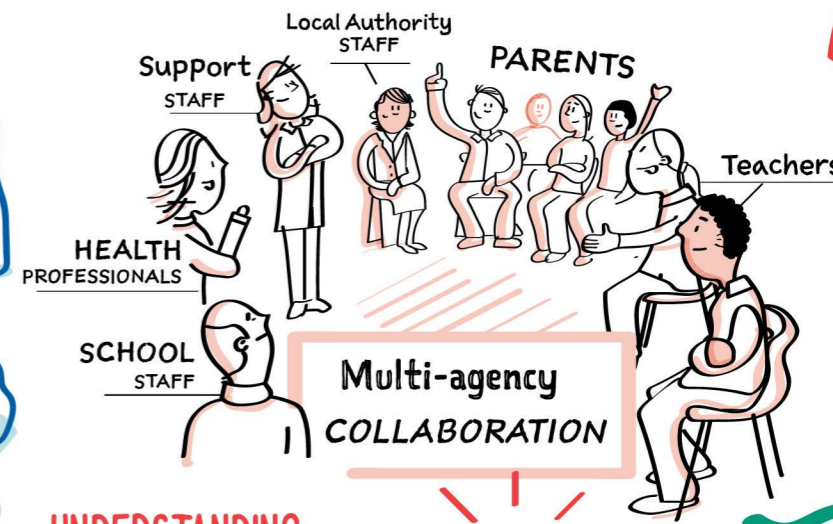
Teachers - Children - Parents - Partners

**MONITORING and REVIEW** of progress



## PROFESSIONAL LEARNING HIGHLY APPROPRIATE

3

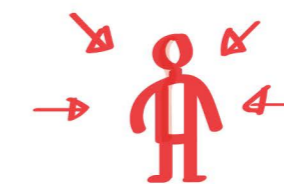


**Multi-agency COLLABORATION**

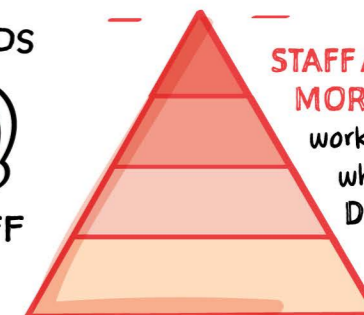
**UNDERSTANDING** of CHILDREN'S NEEDS



PARENTS AND STAFF TALK REGULARLY



ENABLES STAFF TO **MEET THE NEEDS** of children very effectively



**STAFF ARE MORE CONFIDENT** working with children who have a **WIDE, DIVERSE RANGE OF NEEDS.**

**ENHANCES STAFF**



CAREFUL CLUSTER AND SCHOOL PLANNING FOR PROFESSIONAL LEARNING

