



September 2019

THE DEVELOPMENT OF  
STRONG CORE VALUES AND  
A SHARED VISION HAS LED  
TO A SUPPORTIVE  
LEARNING ENVIRONMENT  
FOCUSED ON

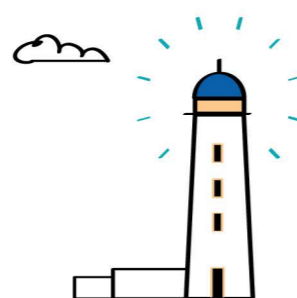
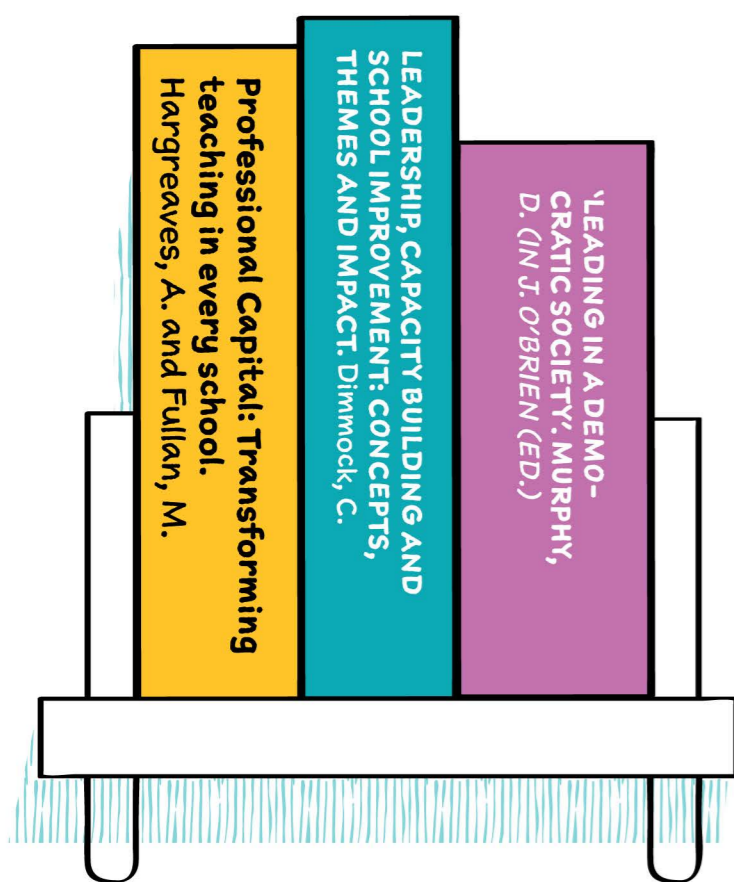
**CHILDREN'S  
WELLBEING**

# BLOG

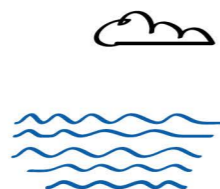
As a new headteacher to a new partnership school, I was very aware of the importance of communication and relationships. I was midway through my Into Headship qualification, and so had been reading extensively around leadership and strategic change. While not wishing to come into both schools and start changing everything, I felt it was important to have something across both schools which would serve to unify the communities, and provide a focus for ongoing development.

**INNERWICK**

Bookshelf of Reading and Research



Early questionnaires for all stakeholders revealed that staff and parents recognised holistic health and wellbeing as a priority, and also identified 'resilience' in our children as an area for development. Children had expressed a desire to promote good relationships across the school.



After implementing a new wellbeing resource across both schools, we decided to review the original core values settling on: 'respect'; 'can-do mindset'; 'cooperation'; 'enquiring mind' and 'resilience'.



Each week at assembly, teachers award specific 'core value' certificates to children who have caught the eye that week in any of the given categories. Furthermore, more generic sticker charts are also maintained by every child linked to our core values. Classes have been assigned certain dates in the annual calendar on which they are asked to present on a core value of their choice, while routinely the HT or principal teacher will focus on the range of core values throughout the year at assembly.

**RESPECT**

**CAN-DO ATTITUDE**

**COOPERATION**

**ENQUIRING MIND**

Children and parents are very aware of our values and this shared language is embedded across the community. Children can talk confidently about how these core values impact on their learning experiences. The school receives regular feedback from visitors about the friendly, respectful ethos in the school, and parents comment on how their children refer to the core values when discussing their daily school experiences at home.

**Resilience**

The core values ethos across Innerwick Primary provides a strong framework on which to develop joint initiatives.

**Ronnie Taylor, Headteacher**